

LOC/DME I-HWY	APP CRS	Rwy Idg	8400
<b>110.9</b>	<b>225°</b>	TDZE	<b>13</b>
Chan <b>46</b>		Apt Elev	<b>13</b>

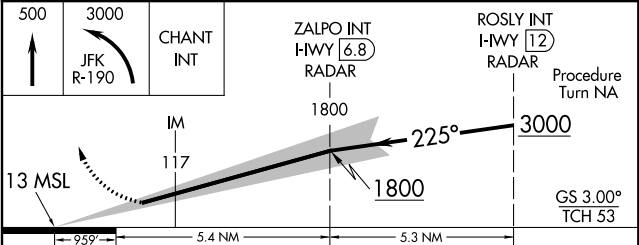
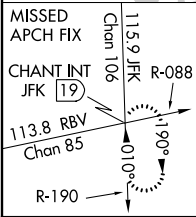
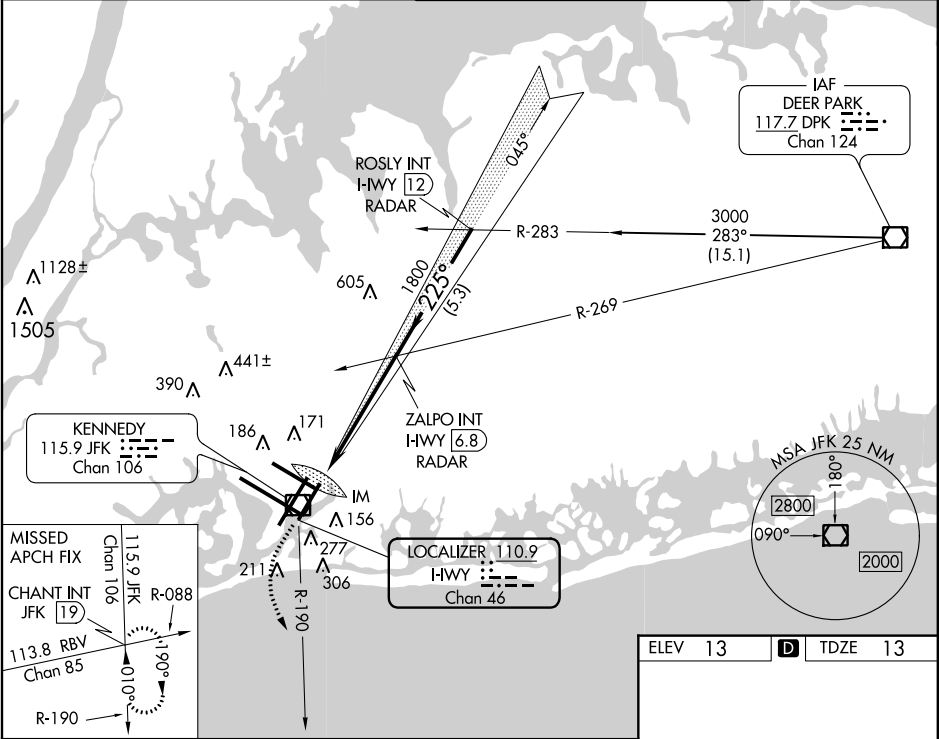
**ILS RWY 22L (CAT II & III)**  
NEW YORK/JOHN F. KENNEDY INTL (JFK)

**Simultaneous approach authorized with Rwy 22R.**

ALSF-2

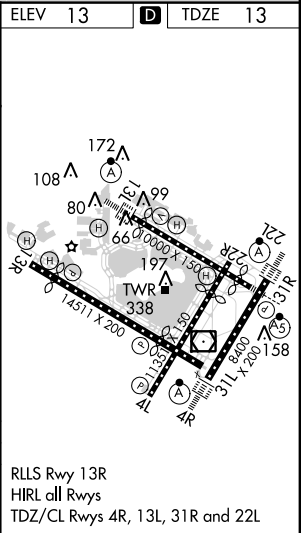
MISSED APPROACH: Climb to 500 then climbing left turn to 3000 via JFK R-190 to CHANT INT/19 DME and hold.

ATIS (ARR-NE)	(ARR-SW)	NEW YORK APP CON	KENNEDY TOWER	GND CON	CLNC DEL
<b>128.725</b>	<b>117.7</b>	<b>115.4</b>	Rwys 4R/22L and 13L/31R <b>119.1 281.55</b> Rwys 4L/22R and 13R/31L <b>123.9 281.55</b>	<b>121.9 348.6</b>	<b>135.05 348.6</b>



CATEGORY	A	B	C	D
S-ILS 22L	CAT II RA 113/12	100 DA 113		
S-ILS 22L	CAT IIIa	RVR 07		
S-ILS 22L	CAT IIIb	RVR 06		
S-ILS 22L	CAT IIIc	NA		

**CATEGORY II & III ILS - SPECIAL AIRCREW & AIRCRAFT CERTIFICATION REQUIRED**



NE-2, 02 MAY 2013 to 30 MAY 2013

NE-2, 02 MAY 2013 to 30 MAY 2013