

APP CRS	Rwy Idg	8400
225°	THRE	13
	Apt Elev	14

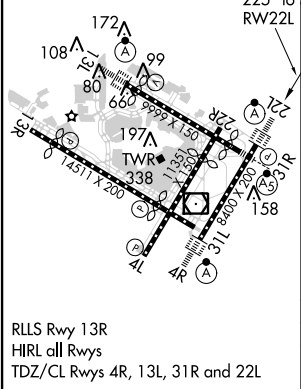
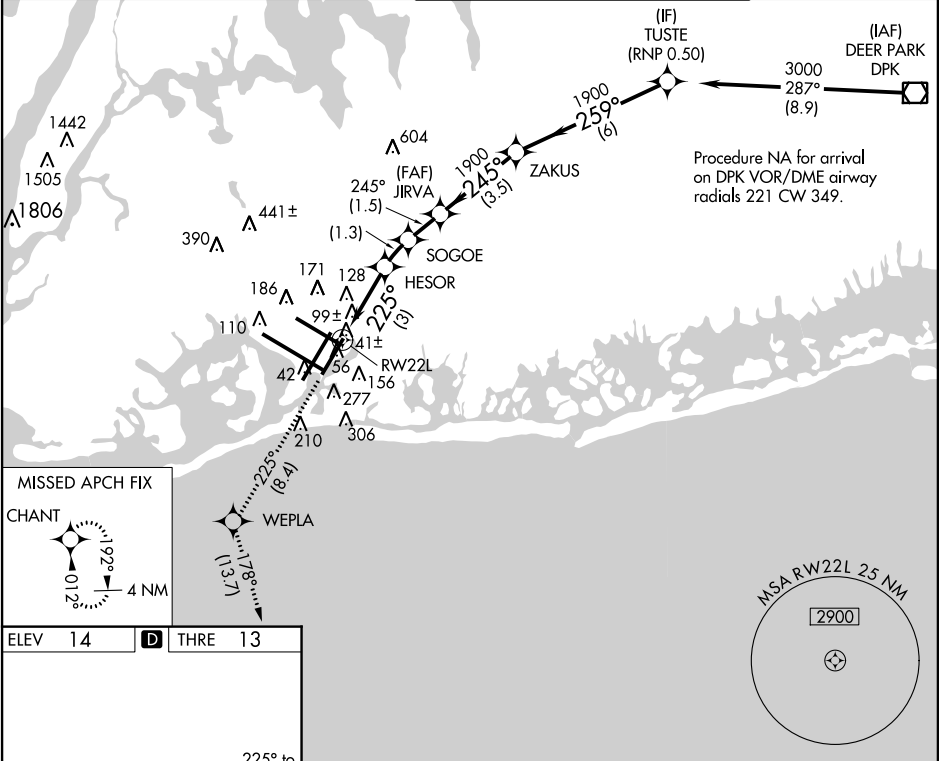
RNAV (RNP) Z RWY 22L

JOHN F KENNEDY INTL (JFK)

For uncompensated Baro-VNAV systems, procedure NA below -12°C (11°F) or above 54°C (130°F). RF required. GPS required. Simultaneous approach authorized with ILS Rwy 22R. Use of FD or AP providing RNAV track guidance required during simultaneous operations. For inop ALSF, increase RNP 0.20 and RNP 0.30 all Cnts visibility to RVR 6000.

ALSF-2 MISSED APPROACH: Climb to 3000 on track 225° to WEPLA and on track 178° to CHANT and hold.

ATIS (ARR-NE) (ARR-SW)	NEW YORK APP CON	KENNEDY TOWER Rwy 4R/22L and 13L/31R Rwy 4L/22R and 13R/31L	GND CON	CLNC DEL
128.725 117.7 115.4	128.12 269.0	119.1 281.55 123.9 281.55	121.9 348.6	135.05 348.6



3000	tr 225°	WEPLA	tr 178°	CHANT	VGSi and RNAV glidepath not coincident (VGSi Angle 3.00/TCH 66).		
CATEGORY		A		B		C	D
RNP 0.20 DA				317/40		304 (400-¾)	
RNP 0.30 DA				406/40		393 (400-¾)	
AUTHORIZATION REQUIRED							

NE-2, 30 APR 2015 to 28 MAY 2015

NE-2, 30 APR 2015 to 28 MAY 2015