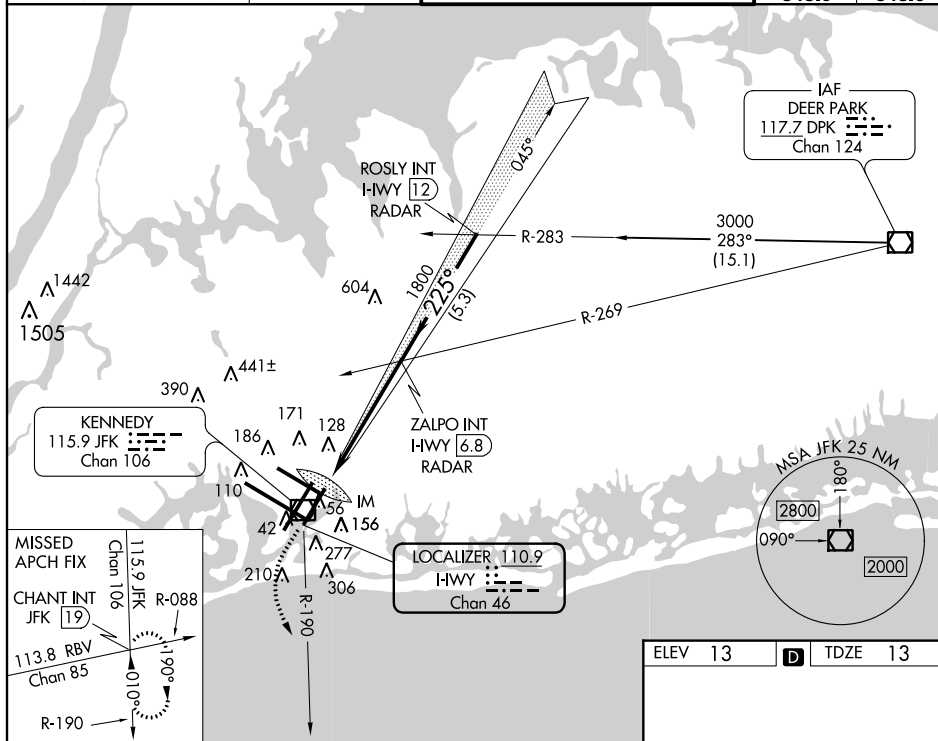


ILS RWY 22L (CAT II & III)
JOHN F KENNEDY INTL (JFK)

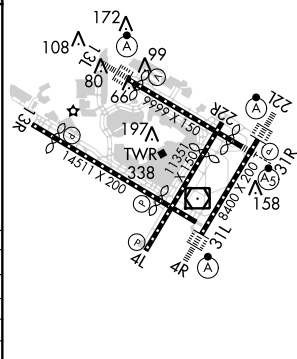
MISSED APPROACH: Climb to 500 then climbing left turn to 3000 via JFK R-190 to CHANT INT/19 DME and hold.

ATIS (ARR-NE) (ARR-SW)		NEW YORK APP CON		KENNEDY TOWER		GND CON	CLNC DEL
128.725	117.7	128.12	269.0	Rwys 4R/22L and 13L/31R	119.1 281.55	121.9	135.05
				Rwys 4L/22R and 13R/31L	123.9 281.55	348.6	348.6



500 ↑	3000 JFK R-190	CHANT INT	ZALPO INT I-WY <u>6.8</u> RADAR 1800				ROSLY INT I-WY <u>12</u> RADAR 3000	Procedure Turn NA
CATEGORY	A		B		C		D	
S-ILS 22L	CAT II RA 113/12 100 DA 113							
S-ILS 22L	CAT IIIa RVR 07							
S-ILS 22L	CAT IIIb RVR 06							
S-ILS 22L	CAT IIIc NA							

CATEGORY II & III ILS - SPECIAL AIRCREW
& AIRCRAFT CERTIFICATION REQUIRED



RLLS Rwy 13R
HIRL all Rwys
TDZ/CL Rwys 4R, 13L, 31R and 22L