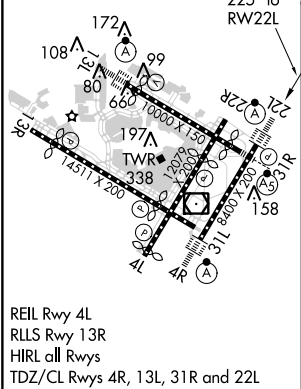
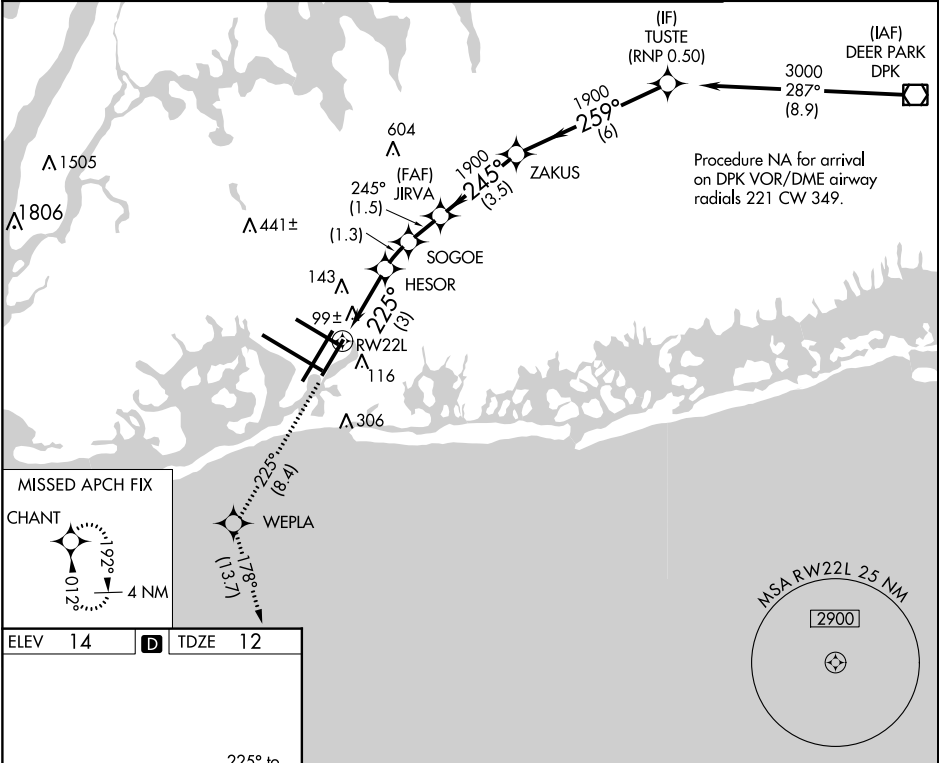


| | | |
|---------|----------|------|
| APP CRS | Rwy Idg | 8400 |
| 225° | TDZE | 12 |
| | Apt Elev | 14 |

RNAV (RNP) Z RWY 22L
JOHN F KENNEDY INTL (JFK)

| | | |
|--|------------|--|
| ▼ For uncompensated Baro-VNAV systems, procedure NA below -12°C (11°F) or above 54°C (130°F). RF required. GPS required. Simultaneous operations authorized. Use of FD or AP providing RNAV track guidance required during simultaneous operations. For inop ALSF, increase RNP 0.20 and RNP 0.30 all Cats visibility to RVR 6000. | ALSF-2 | MISSED APPROACH: Climb to 3000 on track 225° to WEPLA and on track 178° to CHANT and hold. |
|--|------------|--|

| | | | | | | | |
|---------------------------------------|------------------|--|-------|--------|---------|----------|-------|
| D-ATIS (ARR/DEP) (ARR-NE) (ARR-SW) | NEW YORK APP CON | KENNEDY TOWER Rwys 4R/22L and 13L/31R | 119.1 | 281.55 | GND CON | CLNC DEL | CPDLC |
| 128.725 117.7 115.4 | 128.12 269.0 | Rwys 4L/22R and 13R/31L | 123.9 | 281.55 | 121.9 | 135.05 | |
| | | | | | 348.6 | 348.6 | |



| | | | | | | |
|---|---------|------------|--------------------|------------|---|---|
| 3000 ↑ | tr 225° | WEPLA ✧ | tr 178° | CHANT ✧ | VGSi and RNAV glidepath not coincident (VGSi Angle 3.00/TCH 66). | |
| <p>RW22L 225° 3000</p> <p>HESOR 1019 SOGOE 1429 JIRVA 1900 ZAKUS 1900 TUSTE 3000</p> <p>3 NM 1.3 NM 1.5 NM 3.5 NM 6 NM</p> <p>GP 3.00° TCH 50</p> | | | | | | |
| CATEGORY | A | | B | | C | D |
| RNP 0.20 DA | | | 316/40 304 (400-¾) | | | |
| RNP 0.30 DA | | | 405/40 393 (400-¾) | | | |
| AUTHORIZATION REQUIRED | | | | | | |