

LOC/DME F-JOC 109.5 Chan 32	APP CRS 222°	Rwy Idg 7795 TDZE 13 Apt Elev 13
---	------------------------	---

ILS RWY 22R

JOHN F KENNEDY INTL (JFK)

T
A Simultaneous approach authorized with Rwy 22L.

MISSED APPROACH: Climb to 700 then climbing right turn to 4000 direct COL VOR/DME and hold.

D-ATIS			NEW YORK APP CON			KENNEDY TOWER			GND CON	CLNC DEL	CPDLC
(ARR/DEP)	(ARR-NE)	(ARR-SW)				Rwys 4R/22L and 13L/31R					
128.725	117.7	115.4	128.12	269.0		119.1	281.55	121.9	135.05		
						Rwys 4L/22R and 13R/31L	123.9	281.55	348.6	348.6	

RADAR REQUIRED

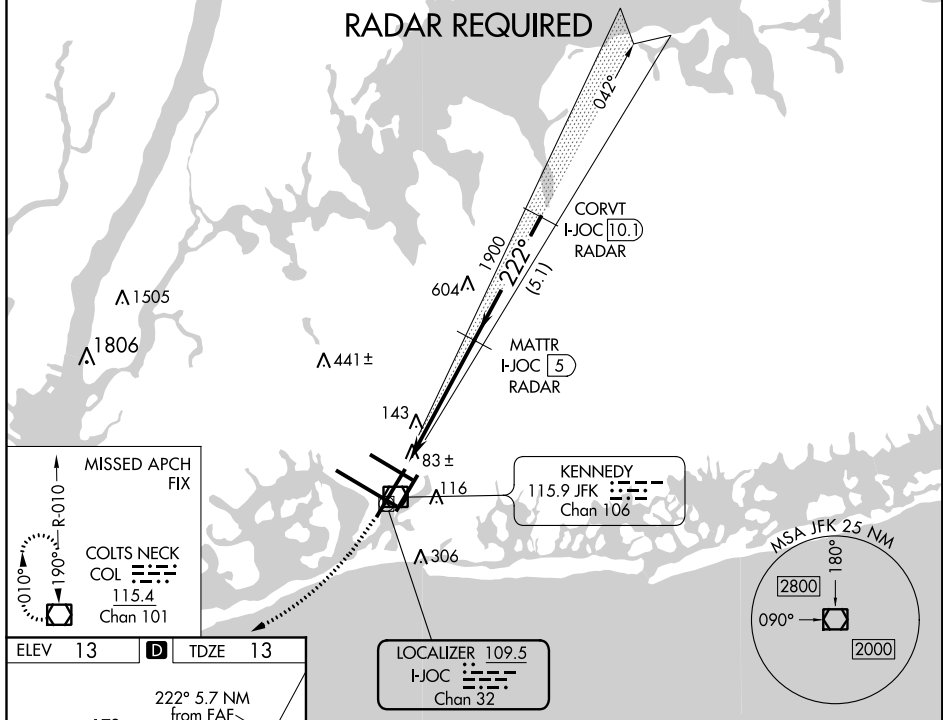
[illegible]

Diagram illustrating a heading of 222° with associated radar and navigation data:

- 700**: Upward arrow.
- 4000**: Curved arrow pointing up and to the right.
- COL**: Square symbol with a circle inside.
- MATTR I-JOC [5] RADAR**: Radar label with a vertical dashed line extending down to the heading line.
- CORVT I-JOC [10.1] RADAR**: Radar label with a vertical dashed line extending down to the heading line.
- 1900**: Value on the vertical dashed line from MATTR radar.
- 1900**: Value on the heading line, marked with a lightning bolt symbol.
- 3000**: Value on the heading line, marked with a lightning bolt symbol.
- GS 3.00° TCH 59**: Ground speed and threshold data.
- 5.7 NM** and **5.1 NM**: Distance markers along the heading line.

CATEGORY	A	B	C	D
S-ILS 22R	263/40 250 (300-¾)			
S-LOC 22R	460/50	447 (500-1)	460/60 447 (500-1¼)	460-1½ 447 (500-1½)
CIRCLING	640-1	627 (700-1)	640-1¾ 627 (700-1¾)	640-2 627 (700-2)