

WAAS CH 97318 W22A	APP CRS 224°	Rwy Idg 8400 TDZE 12 Apt Elev 13
--	------------------------	---

RNAV (GPS) Y RWY 22L

JOHN F KENNEDY INTL (JFK)

RNAV APCH.

▼

For uncompensated Baro-VNAV systems, LNAV/VNAV NA below -13°C (8°F) or above 54°C (130°F). Simultaneous approach authorized. LNAV procedure NA during simultaneous operations. Use of FD or AP providing RNAV track guidance required during simultaneous operations.

ALSIF-2

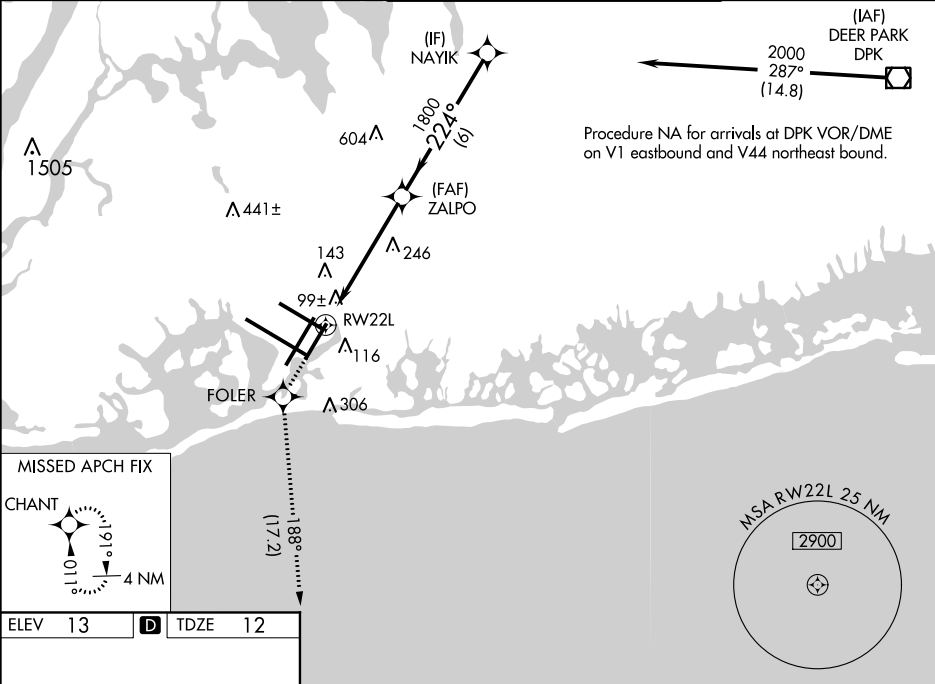
⬆

⬆

⬆

MISSED APPROACH: Climb to 3000 direct FOLER and on track 188° to CHANT and hold.

D-ATIS (ARR/DEP) (ARR-NE) (ARR-SW)			NEW YORK APP CON		KENNEDY TOWER		GND CON	CLNC DEL	CPDLC
128.725 117.7 115.4			128.125 269.0		Rwys 4R/22L and 13L/31R 119.1 281.55 Rwys 4L/22R and 13R/31L 123.9 281.55		121.9 348.6	135.05 348.6	



ELEV 13

D

TDZE 12

3000

FOLER

tr 188°

CHANT

VGSI and RNAV glidepath not coincident (VGSI Angle 3.00/TCH 66).

*LNAV only.

*1.5 NM to RW22L

RW22L

ZALPO

NAYIK

224°

2000

GP 3.00° TCH 53

CATEGORY	A	B	C	D
LPV DA	269/18		257 (300-½)	
LNAV/VNAV DA	419/50		407 (500-1)	
LNAV MDA	560/24	548 (600-½)	560/60	548 (600-1¼)
<div>CIRCLING</div>	640-1	627 (700-1)	640-1¾ 627 (700-1¾)	660-2 647 (700-2)