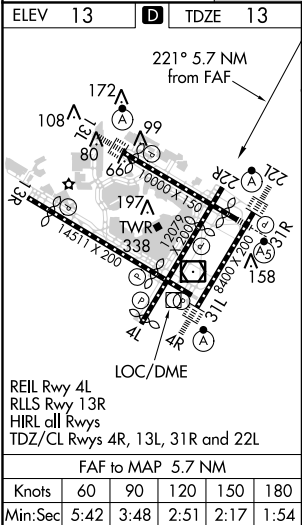
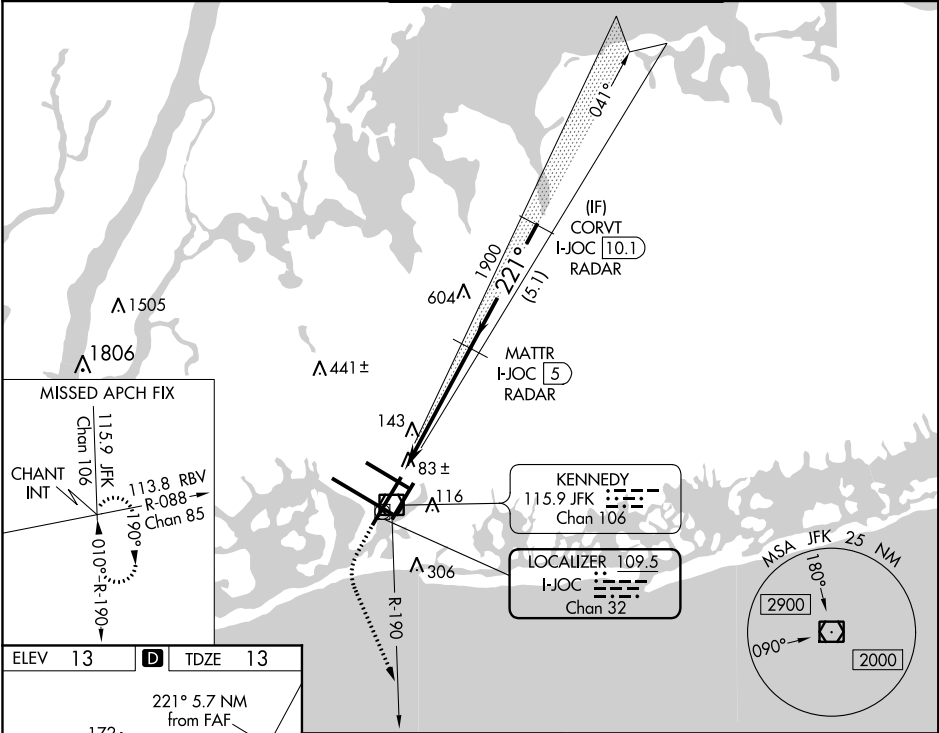


LOC/DME I-JOC	APP CRS	Rwy Idg	7795
109.5	221°	TDZE	13
Chan 32		Apt Elev	13

ILS or LOC RWY 22R
JOHN F KENNEDY INTL (JFK)

RADAR required for procedure entry.		MISSED APPROACH: Climb to 2000 then climbing left turn to 4000 on JFK VOR/DME R-190 to CHANT INT and hold.		
Simultaneous approach authorized.				
D-ATIS (ARR/DEP) (ARR-NE) (ARR-SW)	NEW YORK APP CON	KENNEDY TOWER Rwys 4R/22L and 13L/31R Rwys 4L/22R and 13R/31L	GND CON	CLNC DEL
128.725 117.7 115.4	128.125 269.0	119.1 281.55 123.9 281.55	121.9 348.6	135.05 348.6
			CPDLC	



ELEV 13 TDZE 13		2000 4000		JFK R-190	CHANT INT
VGSI and ILS glidepath not coincident (VGSI Angle 3.00/TCH 77).		MATR I-JOC 5		CORVT I-JOC 10.1	
1900		1900		3000	
5.7 NM		5.1 NM		GS 3.00° TCH 59	
CATEGORY	A	B	C	D	
S-ILS 22R	263/40		250 (300-¾)		
S-LOC 22R	460/50	447 (500-1)	460/60 447 (500-1¼)	460-1½ 447 (500-1½)	
CIRCLING	640-1 627 (700-1)		640-1¾ 627 (700-1¾)	660-2 647 (700-2)	