

NEW YORK, NEW YORK

NE-2, 22 APR 2021 to 20 MAY 2021

NEW YORK APP CON
125.7 269.0
JFK D-ATIS
128.725 (ARR/DEP)
117.7 (ARR-NE)
115.4 (ARR-SW)

ARRIVAL ROUTE DESCRIPTION

KKENNEBUNK TRANSITION (ENE.PARCH3):
PLYMM TRANSITION (PLYMM.PARCH3):
SANDY POINT TRANSITION (SEY.PARCH3):

From PARCH via 265° track to CCC VOR/DME. Then via 229° track to ROBER. Thence....

LDG Rwy 4R/L, Rwy 13R/L, Rwy 31R/L: From ROBER via 278° track to JFK VOR/DME, expect radar vectors to final approach course.

LDG Rwy 22R/L: From ROBER via 283° track to CRALL, then via 302° track to CAPIT, expect radar vectors to final approach course.

LDG Republic (FRG) Airport: Approaching ROBER expect radar vectors to final approach course.

CALVERTON

Expect $\overline{12000}$ and $\overline{250K}$:

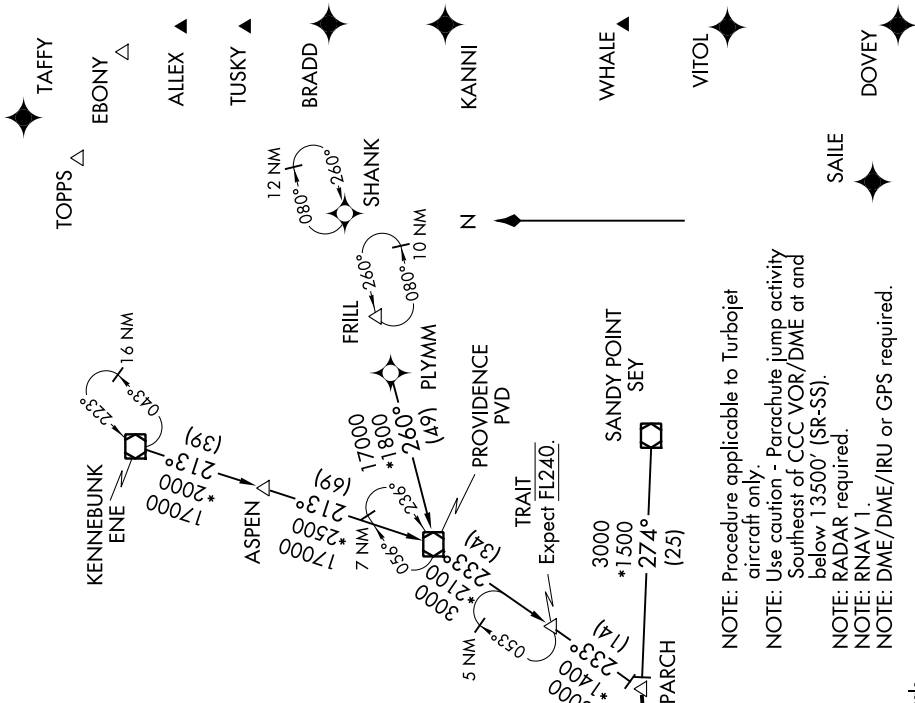
NOTE: Chart not to scale.

JOHN F KENNEDY INTL → CAPIT (1700, 302°) → REPUBLIC (1700, 114°) → CRAIL (1700, 283°) → ROBER (1900, 229°) → ERICK (Expect 9000)

Distances and bearings are provided for each leg of the flight path.

NOTE: Chart not to scale.

NE-2, 22 APR 2021 to 20 MAY 2021



NOTE: Procedure applicable to Turbojet aircraft only.

NOTE: Use caution - Parachute jump activity Southeast of CCC VOR/DME at and below 13500' (SR-SS).

NOTE: RADAR required.

NOTE: RNAV 1.

NOTE: DME/DME/IRU or GPS required.

PARCH THREE ARRIVAL (RNAV)

(PARCH.PARCH3) 19JUL18

NEW YORK, NEW YORK