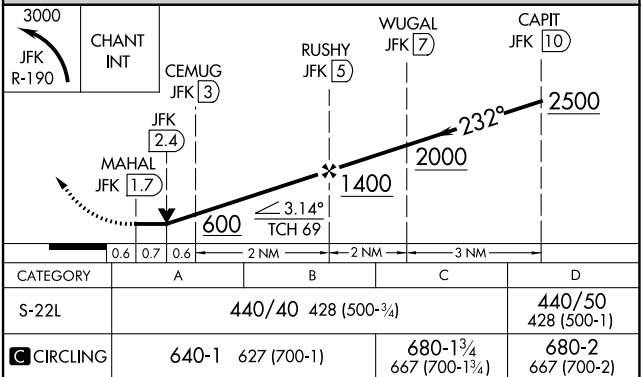
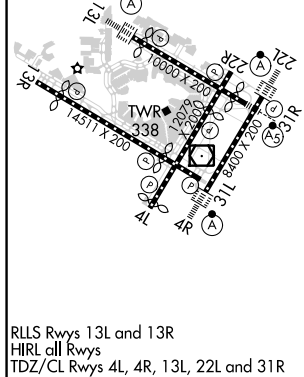
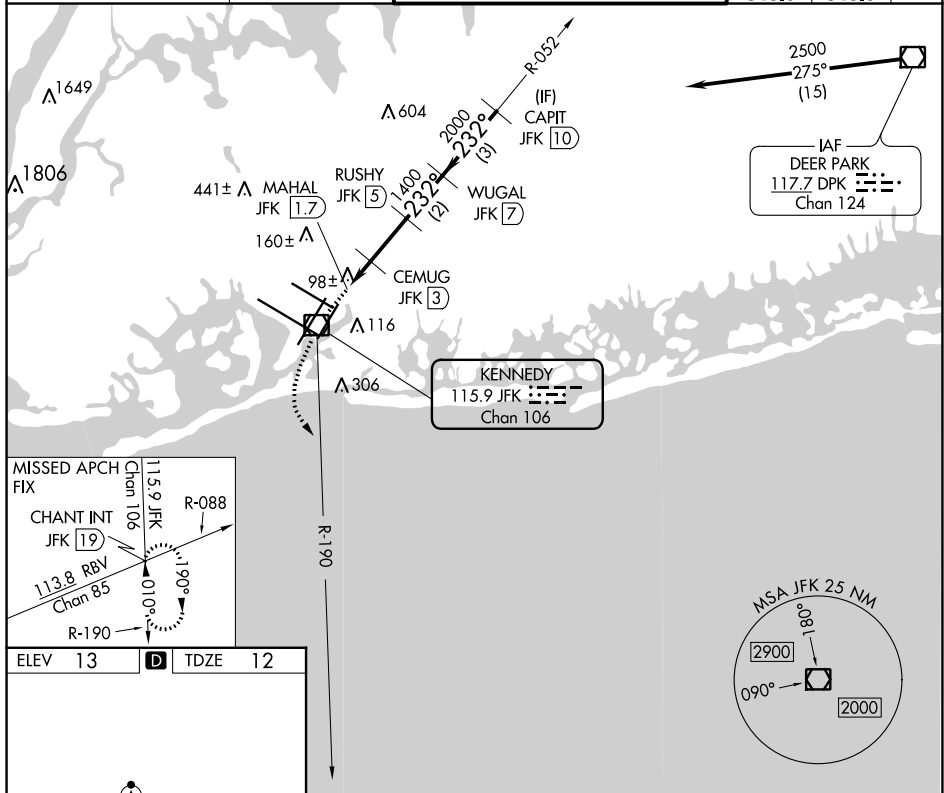


VOR RWY 22L
JOHN F KENNEDY INTL (JFK)

ALSF-2

MISSED APPROACH: Climbing left turn to 3000 on JFK VOR/DME R-190 to CHANT INT/19 DME and hold

D-ATIS (ARR/DEP) (ARR-NE) (ARR-SW)	NEW YORK APP CON		KENNEDY TOWER		GND CON	CLNC DEL	CPDLC
128.725 117.7 115.4	128.125 269.0	Rwys 4R/22L and 13L/31R	119.1 281.55	121.9	135.05		
		Rwys 4L/22R and 13R/31L	123.9 281.55	348.6	348.6		



JOHN F KENNEDY INTL (JFK)
VOR RWY 22L

40°38'N-73°47'W

NE-2, 20 APR 2023 to 18 MAY 2023