

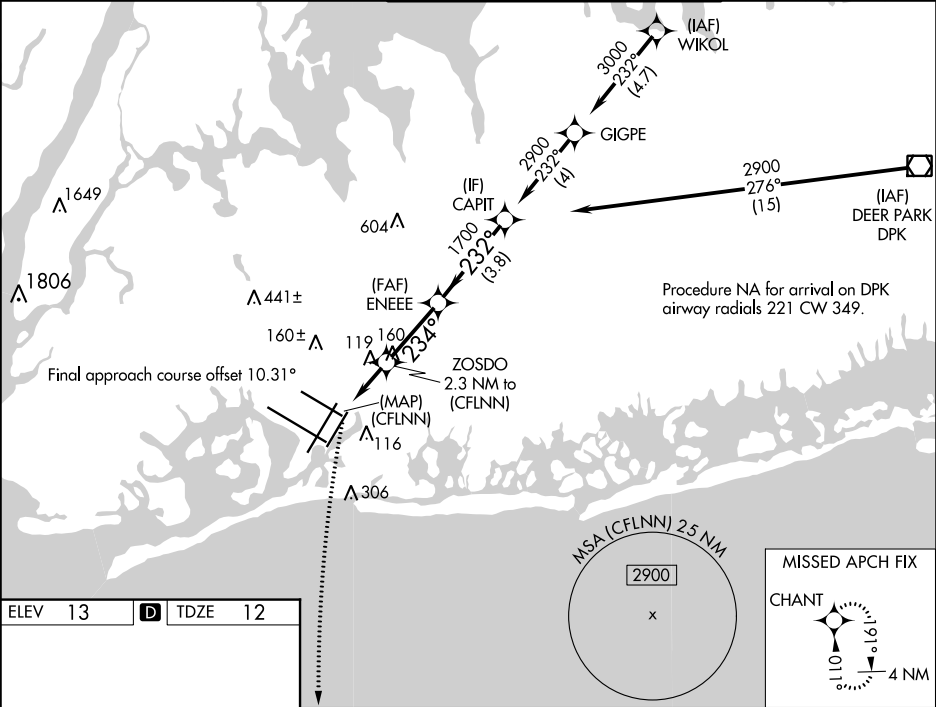
APP CRS	Rwy Idg	8400
234°	TDZE	12
	Apt Elev	13

RNAV (GPS) X RWY 22L

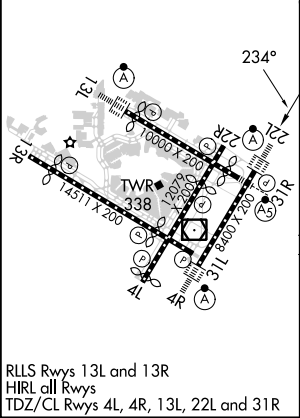
JOHN F KENNEDY INTL (JFK)

RNP APCH - GPS.	ALSF-2	MISSED APPROACH: Climbing left turn to 3000 direct CHANT and hold.
For uncompensated Baro-VNAV systems, LNAV/VNAV NA below -14°C or above 54°C. For inop ALS, increase LNAV/VNAV all Cats visibility to RVR 6000.		

D-ATIS	NEW YORK APP CON	KENNEDY TOWER	GND CON	CLNC DEL	CPDLC
(ARR/DEP) (ARR-NE) (ARR-SW)		Rwys 4R/22L and 13L/31R Rwys 4L/22R and 13R/31L			
128.725 117.7 115.4	128.125 269.0	119.1 281.55 123.9 281.55	121.9 348.6	135.05 348.6	



ELEV 13	D	TDZE 12
---------	---	---------



RLS Rwys 13L and 13R
HIRL all Rwys
TDZ/CL Rwys 4L, 4R, 13L, 22L and 31R

3000	CHANT	VGSI and RNAV glidepath not coincident (VGSI Angle 3.00/TCH 66).		
*LNAV only.		*1.1 NM to 2.3 NM to (CFLNN)	ENEE	2900
		(CFLNN)	1700	GP 3.00° TCH 55
		1.1 NM 1.2 NM 2.8 NM 3.8 NM		
CATEGORY	A	B	C	D
LNAV/VNAV DA	413/40		401 (400-¾)	
LNAV MDA	440/24	428 (500-½)	440/40	428 (500-¾)
CIRCLING	640-1	627 (700-1)	680-1¾ 667 (700-1¾)	680-2 667 (700-2)