

APP CRS	Rwy Idg	8400
224°	TDZE	12
	Apt Elev	13

RNAV (RNP) Z RWY 22L

JOHN F KENNEDY INTL (JFK)

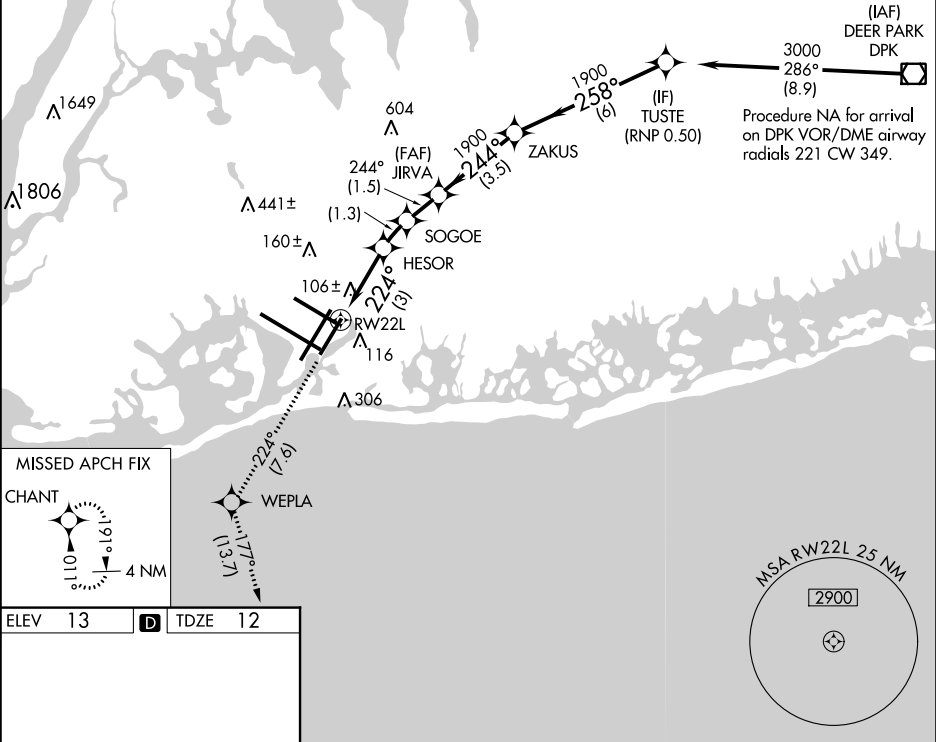
RF required. RNP AR APCH.

For uncompensated Baro-VNAV systems, procedure NA below -12°C (11°F) or above 54°C (130°F). Simultaneous approach authorized. Use of FD or AP providing RNAV track guidance required during simultaneous operations. For inop ALS, increase RNP 0.20 all Cats visibility to RVR 5500, increase RNP 0.30 all Cats visibility to RVR 6000.

ALSF-2

MISSED APPROACH: Climb to 3000 on track 224° to WEPLA and on track 177° to CHANT and hold.

D-ATIS	NEW YORK APP CON	KENNEDY TOWER	GND CON	CLNC DEL	CPDLC
(ARR/DEP) (ARR-NE) (ARR-SW)		Rwys 4R/22L and 13L/31R			
128.725 117.7 115.4	128.125 269.0	119.1 281.55	121.9 286°	135.05 348.6	
		Rwys 4L/22R and 13R/31L		348.6	



ELEV 13

TDZE 12

3000

tr 224°

tr 177°

VGSI and RNAV glidepath not coincident (VGSI Angle 3.00/TCH 66).

JIRVA

ZAKUS

TUSTE

3000

258°

1900

244°

1900

224°

RW22L

1019

1429

3 NM

1.3 NM

1.5 NM

3.5 NM

6 NM

GP 3.00° TCH 50

CATEGORY	A	B	C	D
RNP 0.20 DA		361/40	349 (400-¾)	
RNP 0.30 DA		421/40	409 (500-¾)	

AUTHORIZATION REQUIRED