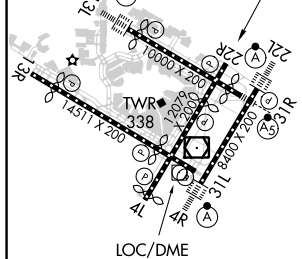
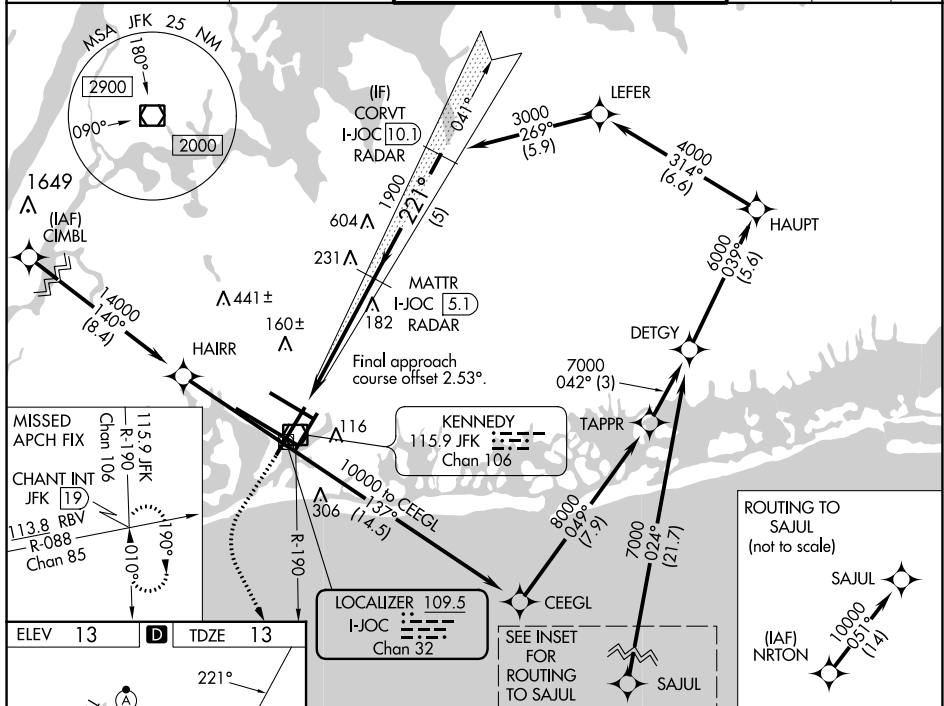


ILS or LOC RWY 22R
JOHN F KENNEDY INTL (JFK)

MISSED APPROACH: Climb to 2000 then climbing left turn to 4000 on JFK VOR/DME R-190 to CHANT INT and hold.

Simultaneous approach authorized.

D-ATIS (ARR/DEP) (ARR-NE) (ARR-SW)	NEW YORK APP CON	KENNEDY TOWER		GND CON	CLNC DEL	CPDLC
128.725 117.7 115.4	128.125 269.0	Rwys 4R/22L and 13L/31R Rwys 4L/22R and 13R/31L	119.1 281.55 123.9 281.55	121.9 348.6	135.05 348.6	



RLS Rwy's 13L and 13R HIRL all Rwy's TDZ/CL Rwy's 4L, 4R, 13L, 22L and 31R					
FAF to MAP 5.7 NM					
Knots	60	90	120	150	180
Min:Sec	5:42	3:48	2:51	2:17	1:54

2000 ↑	4000 JFK R-190	CHANT INT		
<p>VGSJ and ILS glidepath not coincident (VGSJ Angle 3.00/TCH 77).</p>				
<p>MATRR I-JOC 5.1 RADAR</p> <p>CORVT I-JOC 10.1 RADAR</p> <p>1900</p> <p>221°</p> <p>3000</p> <p>GS 3.00° TCH 59</p> <p>5.7 NM</p> <p>5 NM</p>				
CATEGORY	A	B	C	D
S-ILS 22R	263/40 250 (300-¾)			
S-LOC 22R	460/55	447 (500-1)	460-1⅓	447 (500-1⅓)
☐ CIRCLING	640-1	627 (700-1)	680-1⅓ 667 (700-1¾)	680-2 667 (700-2)