

|             |          |             |
|-------------|----------|-------------|
| APP CRS     | Rwy Idg  | <b>8400</b> |
| <b>225°</b> | TDZE     | <b>13</b>   |
|             | Apt Elev | <b>13</b>   |

# RNAV (RNP) Z RWY 22L

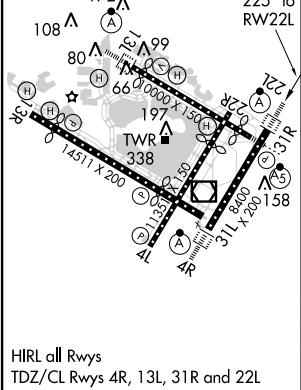
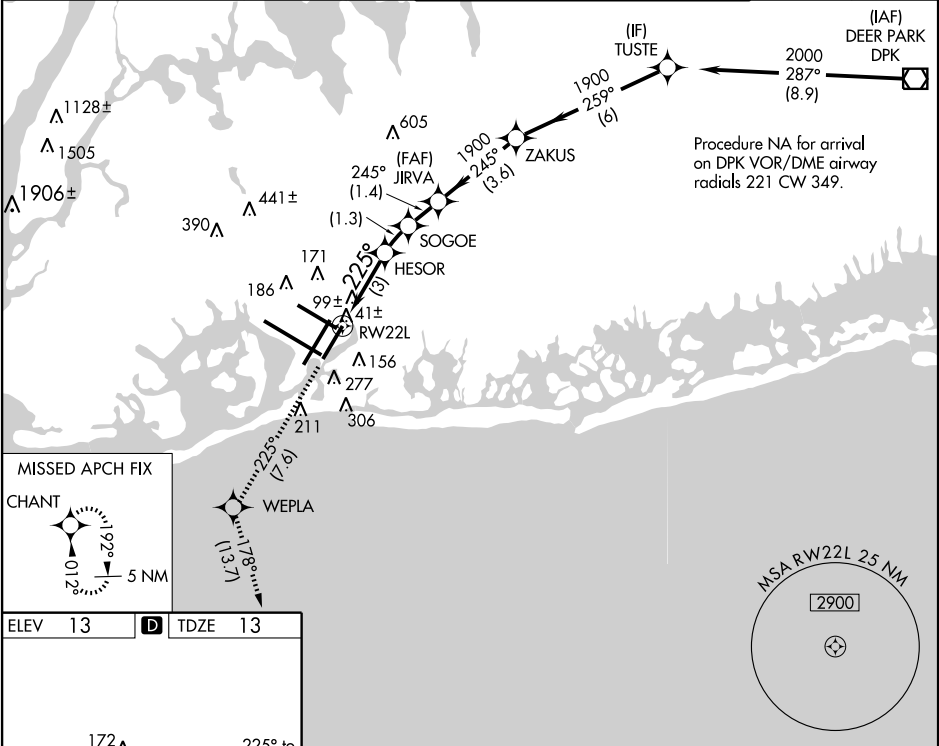
NEW YORK / JOHN F. KENNEDY INTL (JFK)

**NA** For uncompensated Baro-VNAV systems, procedure NA below -13°C (8°F) or above 49°C (120°F). RF and GPS Required. For inoperative ALSF, increase RNP 0.20 DA visibility to RVR 5000 all Cats, RNP 0.30 DA visibility to RVR 6000 all Cats. Visibility reduction by helicopters NA. Simultaneous approach authorized with ILS Rwy 22R. Use of FD or AP providing RNAV track guidance required during simultaneous operations.

**ALSF-2**

**MISSED APPROACH:** Climb to 3000 via 225° track to WEPLA and via 178° track to CHANT and hold.

| ATIS (ARR-NE)  | (ARR-SW)     | NEW YORK APP CON | KENNEDY TOWER  | GND CON                      | CLNC DEL                      |
|----------------|--------------|------------------|--|------------------------------|-------------------------------|
| <b>128.725</b> | <b>117.7</b> | <b>115.4</b>     | Rwys 4R/22L and 13L/31R <b>119.1</b><br>Rwys 4L/22R and 13R/31L <b>123.9</b> | <b>121.9</b><br><b>348.6</b> | <b>135.05</b><br><b>348.6</b> |



|   |                       |            |   |  |   |   |
|---|-----------------------|------------|---|--|---|---|
| 3000<br>↑<br>tr 225°  | WEPLA<br>✧<br>tr 178° | CHANT<br>✧ | VGSI and RNAV glidepath not coincident<br>(VGSI Angle 3.00/TCH 66). |  |   |   |
| <p>RW22L 225° 3 NM 1.3 NM 1.4 NM 3.6 NM 6 NM</p> <p>HESOR 1017 SOGOE 1426 JIRVA 1900 245° 1900 ZAKUS TUSTE 2000 259°</p> <p>Procedure Turn NA<br/>GP 3.00°<br/>TCH 50</p> |                       |            |   |  |   |   |
| CATEGORY  | A                     |            | B   |  | C | D |
| RNP 0.20 DA   |                       |            | 339/40 326 (400-¾)  |  |   |   |
| RNP 0.30 DA   |                       |            | 408/50 395 (400-1)  |  |   |   |
| AUTHORIZATION REQUIRED  |                       |            |   |  |   |   |