

LOC/DME I-HWY	APP CRS	Rwy ldg
<b>110.9</b>	<b>225°</b>	<b>8400</b>
Chan <b>46</b>		TDZE <b>13</b>
		Apt Elev <b>13</b>

# ILS or LOC RWY 22L

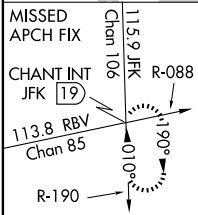
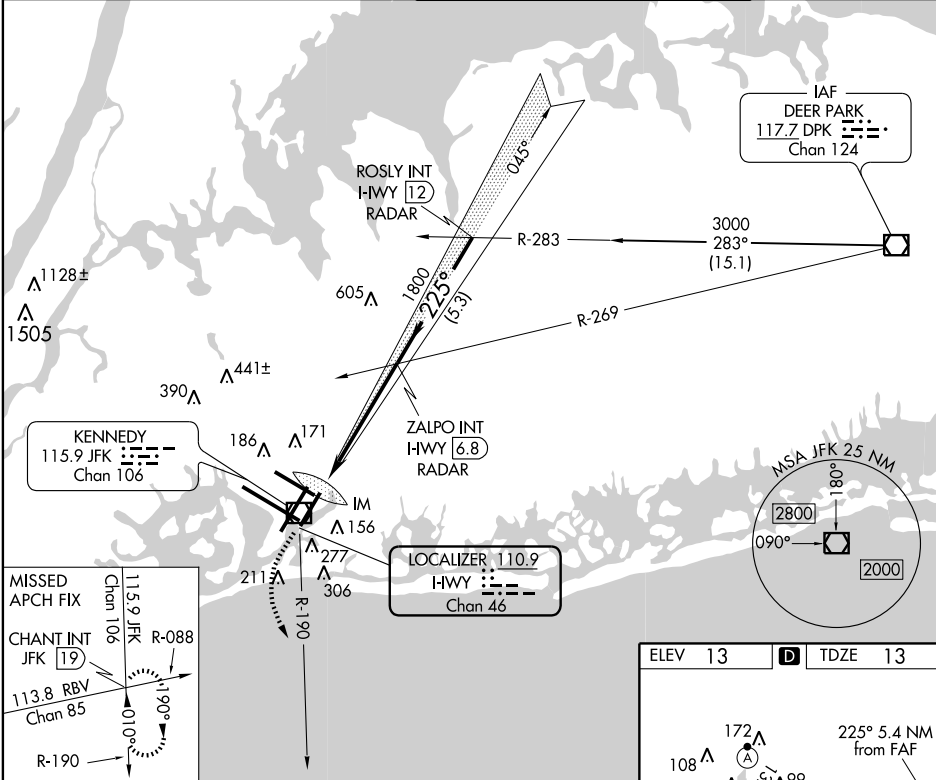
NEW YORK / JOHN F. KENNEDY INTL (JFK)

**Simultaneous approach authorized with Rwy 22R.**

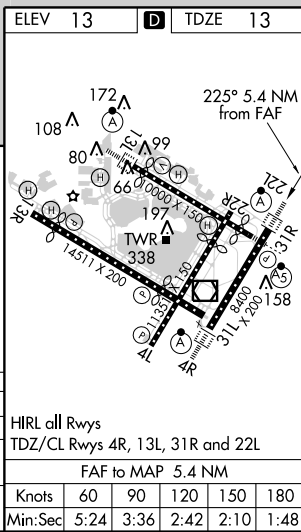
**ALS-F-2**

**MISSED APPROACH:** Climb to 500 then climbing left turn to 3000 via JFK R-190 to CHANT INT/19 DME and hold.

ATIS (ARR-NE)	(ARR-SW)	NEW YORK APP CON	KENNEDY TOWER	GND CON	CLNC DEL
<b>128.725</b>	<b>117.7</b>	<b>115.4</b>	<b>127.4</b>	<b>269.0</b>	Rwys 4R/22L and 13L/31R <b>119.1 281.55</b>
					Rwys 4L/22R and 13R/31L <b>123.9 281.55</b>
					<b>121.9 281.55</b>
					<b>348.6</b>
					<b>135.05</b>
					<b>348.6</b>



500	3000	CHANT INT	ZALPO INT I-HWY 6.8	ROSLY INT I-HWY 12	Procedure Turn NA
↑	JFK R-190		1800	3000	GS 3.00° TCH 53
0.2	5.2 NM	5.3 NM			
CATEGORY	A	B	C	D	
S-ILS 22L	213/18	200 (200-1/2)			
S-LOC 22L	460/24	447 (500-1/2)	460/40	460/50	
			447 (500-3/4)	447 (500-1)	
CIRCLING	640-1	627 (700-1)	640-1 3/4	640-2	
			627 (700-1 3/4)	627 (700-2)	



NE-2, 05 APR 2012 to 03 MAY 2012

NE-2, 05 APR 2012 to 03 MAY 2012