

ILS RWY 22L (CAT III)
NEW YORK/JOHN F. KENNEDY INTL (JFK)

ALSF-2

MISSED APPROACH: Climb to 500 then climbing left turn to 3000 via JFK R-190 to CHANT INT/19 DME and hold.

ATIS (ARR-NE) (ARR-SW)		NEW YORK APP CON		KENNEDY TOWER		GND CON	CLNC DEL
128.725	117.7	115.4	127.4	269.0	Rwys 4R/22L and 13L/31R Rwys 4L/22R and 13R/31L	119.1 281.55 123.9 281.55	121.9 135.05 348.6 348.6

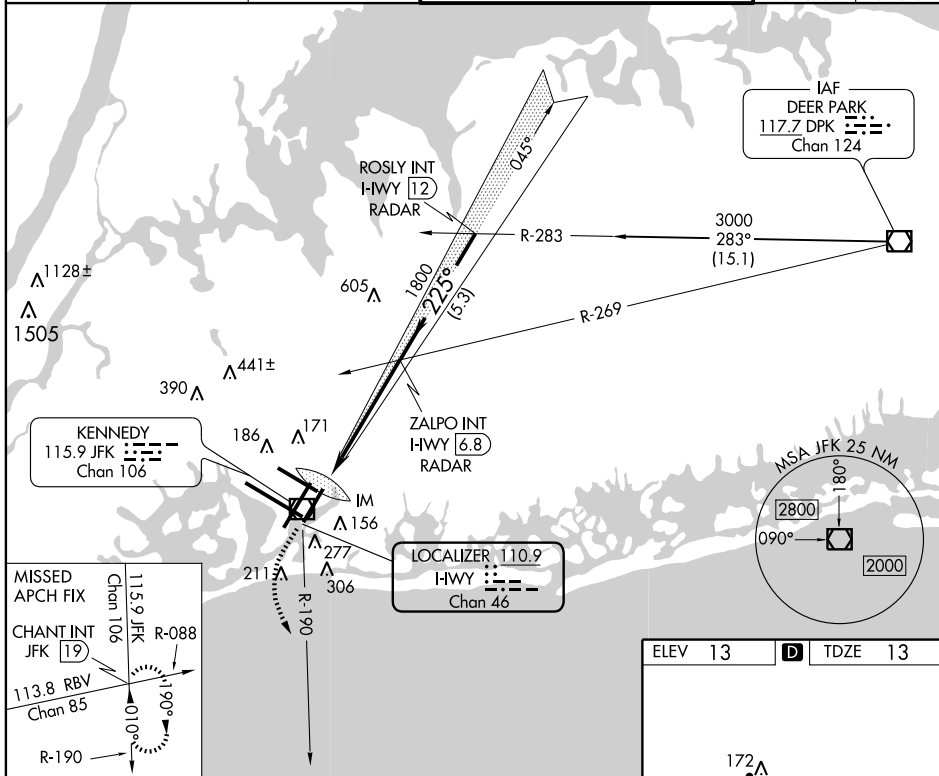


Diagram illustrating the Category III ILS approach for Runway 190 at JFK. The diagram shows the glide slope, altitudes, and distances for the approach.

Altitudes: 13 MSL, 117, 1800, 3000

Distances: 959', 975', 5.2 NM, 5.3 NM

Angles: 225°, 959', 975'

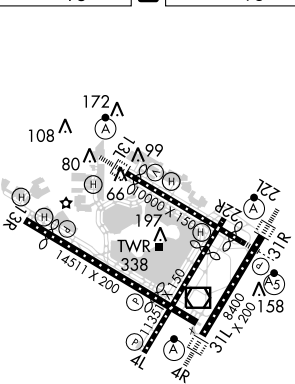
Procedure: Procedure Turn NA

GS 3.00° TCH 53

Category III ILS - SPECIAL AIRCREW & AIRCRAFT CERTIFICATION REQUIRED

CATEGORY	A	B	C	D
S-ILS 22L		CAT IIIa	RVR 07	
S-ILS 22L		CAT IIIb	RVR 06	
S-ILS 22L		CAT IIIc	NA	

ELEV	13	D	TDZE	13
------	----	----------	------	----



HIRL all Rwy's
TDZ/CL Rwy's 4R, 13L, 31R and 22L