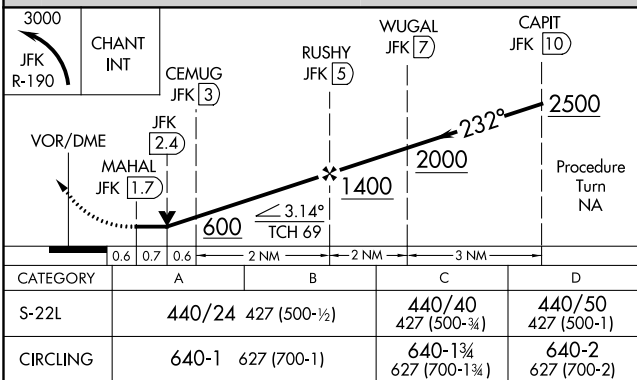
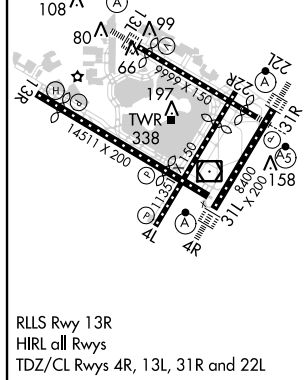
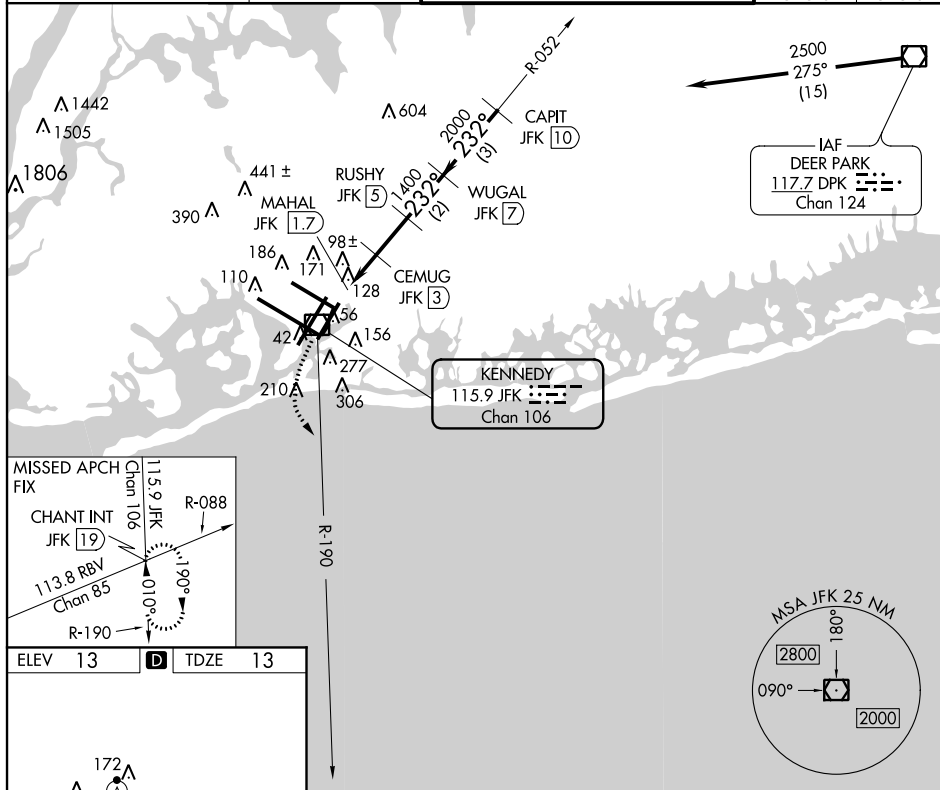


VOR/DME RWY 22L
JOHN F KENNEDY INTL (JFK)



MISSED APPROACH: Climbing left turn to 3000 via JFK R-190 to CHANT INT/19 DME and hold.

ATIS (ARR-NE) (ARR-SW)		NEW YORK APP CON		KENNEDY TOWER		GND CON	CLNC DEL
128.725	117.7	115.4	128.12	269.0	Rwys 4R/22L and 13L/31R Rwys 4L/22R and 13R/31L	119.1 281.55 123.9 281.55	121.9 135.05 348.6 348.6



NE-2, 02 APR 2015 to 30 APR 2015

NE-2. 02 APR 2015 to 30 APR 2015