

WAAS CH <b>97318</b> <b>W22A</b>	APP CRS <b>225°</b>	Rwy Idg TDZE <b>13</b> Apt Elev <b>13</b>
--	------------------------	---

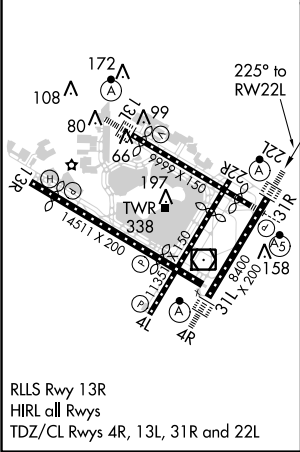
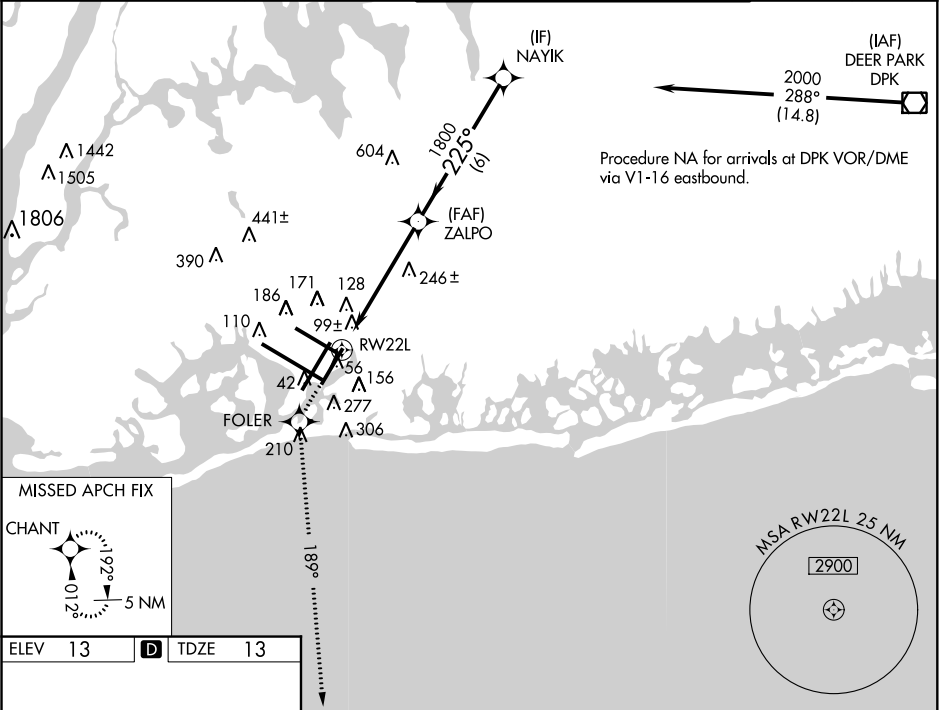
RNAV (GPS) Y RWY 22L  
JOHN F KENNEDY INTL (JFK)

▼ For uncompensated Baro-VNAV systems, LNAV/VNAV NA below -13°C (8°F) or above 49°C (120°F), DME/DME RNP-0.3 NA. Simultaneous approach authorized with Rwy 22R. LNAV procedure NA during simultaneous operations. Use of FD or AP providing RNAV track guidance required during simultaneous operations.

ALSF-2

MISSED APPROACH: Climb to 3000 direct FOLER and via 189° track to CHANT and hold.

ATIS (ARR-NE) (ARR-SW) <b>128.725 117.7 115.4</b>	NEW YORK APP CON <b>128.12 269.0</b>	KENNEDY TOWER Rwys 4R/22L and 13L/31R <b>119.1 281.55</b> Rwys 4L/22R and 13R/31L <b>123.9 281.55</b>	GND CON <b>121.9 348.6</b>	CLNC DEL <b>135.05 348.6</b>
---	---	---	-------------------------------	---------------------------------



3000	FOLER	tr 189°	CHANT	VGSI and RNAV glidepath not coincident (VGSI Angle 3.00/TCH 66).
<p>*LNAV only</p> <p>*1.5 NM to RWY22L</p> <p>RWY22L</p> <p>ZALPO</p> <p>NAYIK</p> <p>2000</p> <p>225°</p> <p>1800</p> <p>Procedure Turn NA</p> <p>GS 3.00°</p> <p>TCH 53</p>				
CATEGORY	A	B	C	D
LPV DA	270/24 257 (300-½)			
LNAV/VNAV DA	420/50 407 (500-1)			
LNAV MDA	560/24 547 (600-½)		560/50 547 (600-1) 560/60 547 (600-1¼)	
CIRCLING	640-1 627 (700-1)		640-1¾ 627 (700-1¾) 640-2 627 (700-2)	

NE-2, 02 APR 2015 to 30 APR 2015

NE-2, 02 APR 2015 to 30 APR 2015