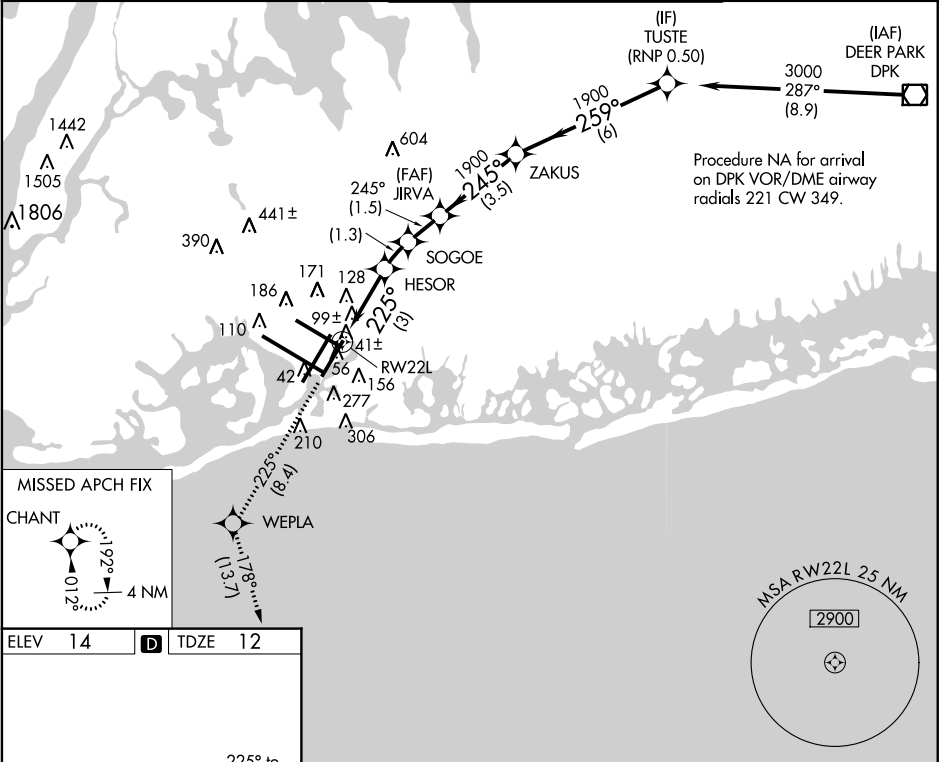


APP CRS	Rwy Idg	8400
225°	TDZE	12
	Apt Elev	14

RNAV (RNP) Z RWY 22L
JOHN F KENNEDY INTL (JFK)

▼ For uncompensated Baro-VNAV systems, procedure NA below -12°C (11°F) or above 54°C (130°F). RF required. GPS required. Simultaneous approach authorized with ILS Rwy 22R. Use of FD or AP providing RNAV track guidance required during simultaneous operations. For inop ALSF, increase RNP 0.20 and RNP 0.30 all Cats visibility to RVR 6000.	ALSF-2 	MISSED APPROACH: Climb to 3000 on track 225° to WEPLA and on track 178° to CHANT and hold.
---	------------	--

ATIS (ARR-NE) (ARR-SW)	NEW YORK APP CON	KENNEDY TOWER Rwys 4R/22L and 13L/31R	119.1	281.55	GND CON	CLNC DEL	CPDLC
128.725 117.7 115.4	128.12 269.0	Rwys 4L/22R and 13R/31L	123.9	281.55	121.9	135.05	
					348.6	348.6	



--

NE-2, 31 MAR 2016 to 28 APR 2016

NE-2, 31 MAR 2016 to 28 APR 2016