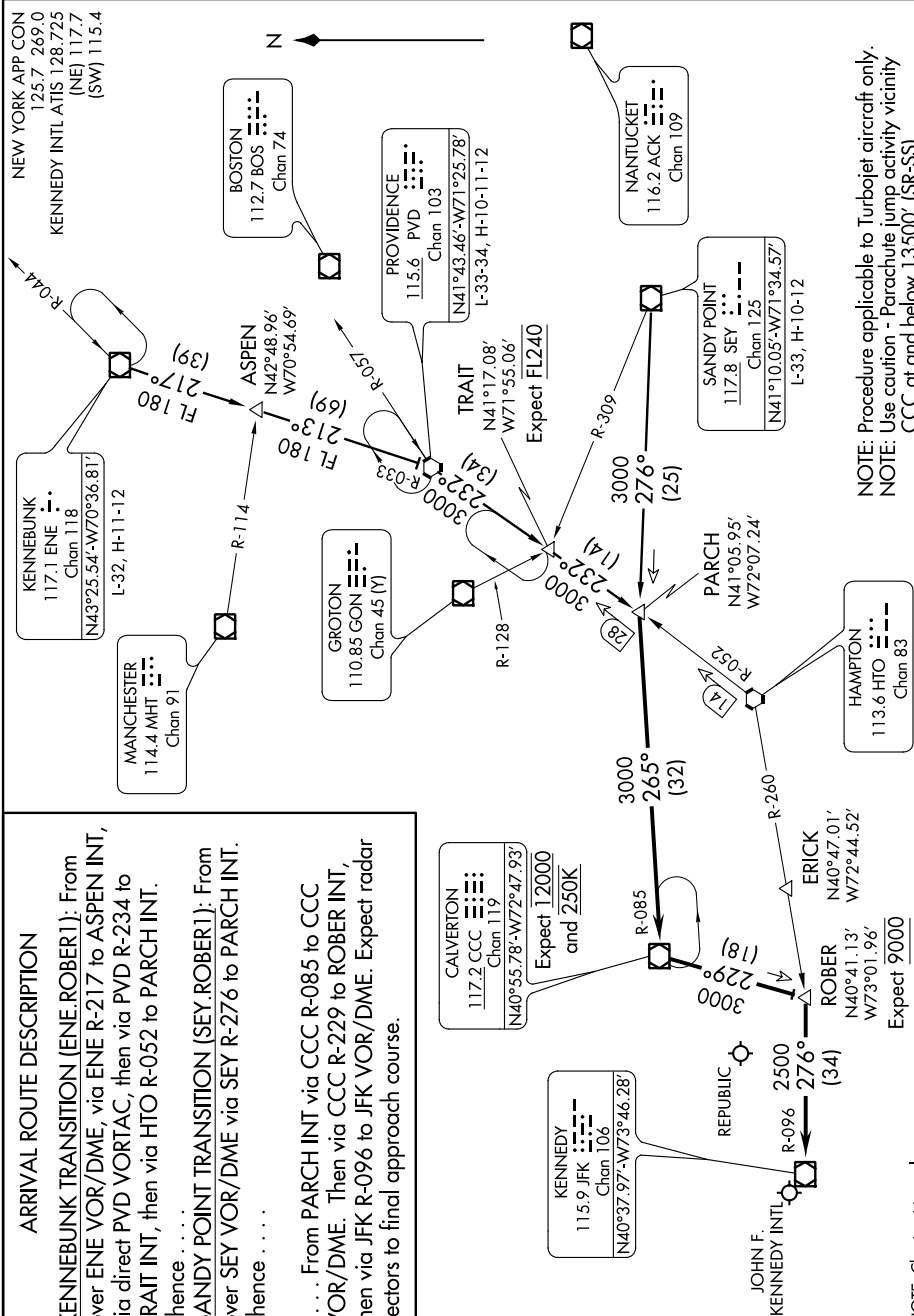


## ARRIVAL ROUTE DESCRIPTION

KENNEDYBUNK TRANSITION [ENE.ROBER1]: From  
 over ENE VOR/DME, via ENE R-217 to ASPEN INT,  
 via direct PVD VORTAC, then via PVD R-234 to  
 TRAIT INT, then via HTO R-052 to PARCH INT.  
 Thence . . . .  
 SANDY POINT TRANSITION [SEY.ROBER1]: From  
 over SEY VOR/DME via SEY R-276 to PARCH INT.  
 Thence . . . .

..... From PARCH INT via CCC R-085 to CCC VOR/DME. Then via CCC R-229 to ROBER INT, then via JFK R-096 to JFK VOR/DME. Expect radar vectors to final approach course.



NOTE: Procedure applicable to Turbojet aircraft only.  
NOTE: Use caution - Parachute jump activity vicinity CCC at and below 13500' (SR-SS).

NOTE: Chart not to scale.

NE-2, 31 MAR 2016 to 28 APR 2016