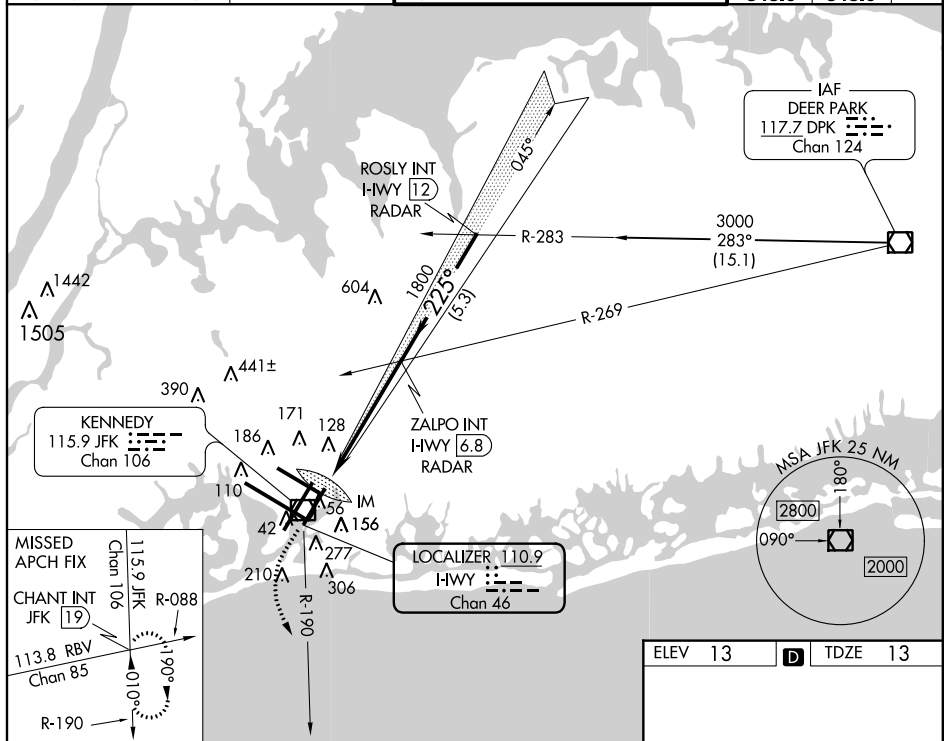


ILS RWY 22L (CAT II & III)
JOHN F KENNEDY INTL (JFK)

MISSED APPROACH: Climb to 500 then climbing left turn to 3000 via JFK R-190 to CHANT INT/19 DME and hold.

ATIS (ARR-NE) (ARR-SW)			NEW YORK APP CON		KENNEDY TOWER		GND CON	CLNC DEL	CPDLC
128.725	117.7	115.4	128.12	269.0	Rwys 4R/22L and 13L/31R Rwys 4L/22R and 13R/31L	119.1 281.55 123.9 281.55	121.9 348.6	135.05 348.6	



500
↑
JFK
R-190

CHANT
INT

ZALPO INT
I-WY 6.8
RADAR

ROSLY INT
I-WY 12
RADAR

Procedure
Turn NA

IM
117

1800

225°

3000

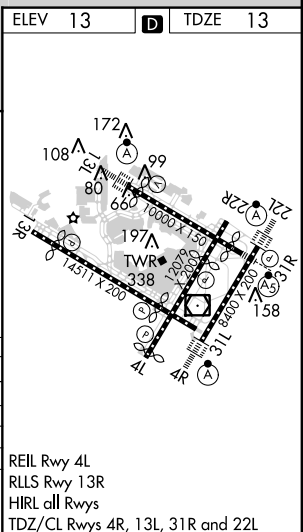
GS 3.00°
TCH 53

5.4 NM

5.3 NM

CATEGORY	A	B	C	D
S-ILS 22L	CAT II RA 113/12 100 DA 113			
S-ILS 22L	CAT IIIa RVR 07			
S-ILS 22L	CAT IIIb RVR 06			
S-ILS 22L	CAT IIIc NA			

CATEGORY II & III ILS - SPECIAL AIRCREW
& AIRCRAFT CERTIFICATION REQUIRED



NE-2, 31 MAR 2016 to 28 APR 2016

NE-2. 31 MAR 2016 to 28 APR 2016