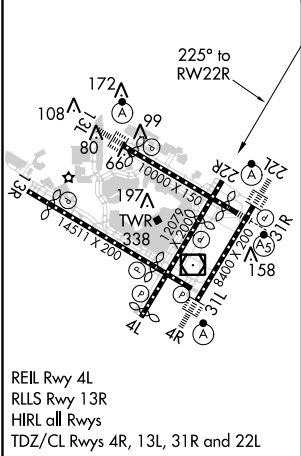
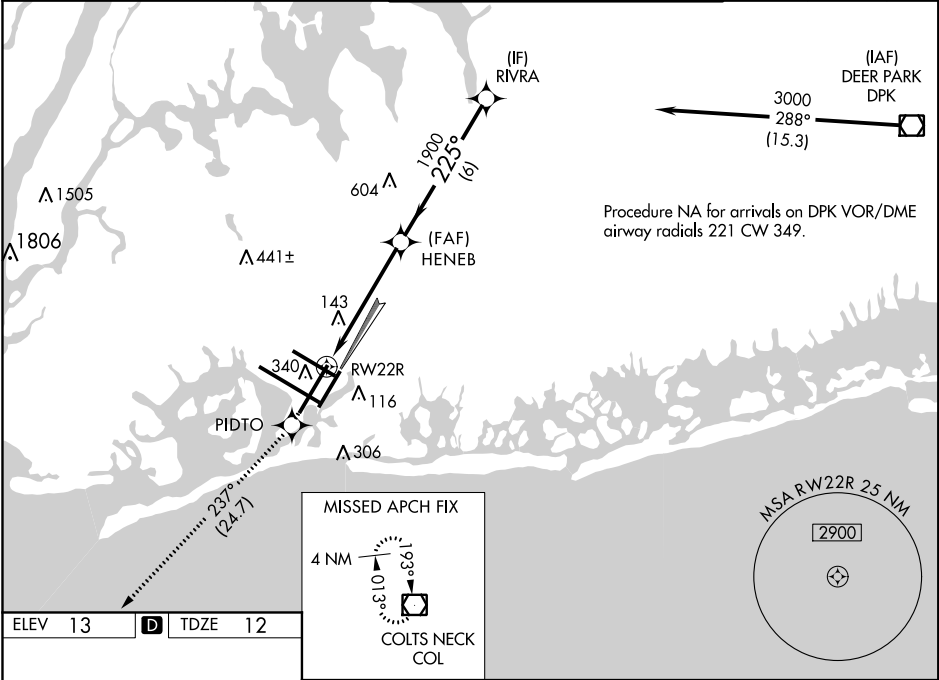


WAAS CH 40019 W22B	APP CRS 225°	Rwy Idg 7795 TDZE 12 Apt Elev 13
--	------------------------	---

RNAV (GPS) RWY 22R
JOHN F KENNEDY INTL (JFK)

<p>▽ For uncompensated Baro-VNAV systems, LNAV/VNAV NA below -12°C (11°F) or above 54°C (130°F). DME/DME RNP-0.3 NA. Simultaneous approach authorized. LNAV procedure NA during simultaneous operations. Use of FD or AP providing RNAV track guidance required during simultaneous operations.</p>	<p>MISSED APPROACH: Climb to 4000 direct PIDTO and on track 237° to COL VOR/DME and hold.</p>
--	--

D-ATIS (ARR/DEP) (ARR-NE) (ARR-SW) 128.725 117.7 115.4	NEW YORK APP CON 128.125 269.0	KENNEDY TOWER Rwys 4R/22L and 13L/31R 119.1 281.55 Rwys 4L/22R and 13R/31L 123.9 281.55	GND CON 121.9 135.05 348.6 348.6	CLNC DEL 135.05 348.6	CPDLC
---	--	---	--	---------------------------------	-------



4000 ↑	PIDTO ✦	COL tr 237° ☐				
-----------	------------	---------------------	--	--	--	--

NE-2, 29 MAR 2018 to 26 APR 2018

NE-2, 29 MAR 2018 to 26 APR 2018