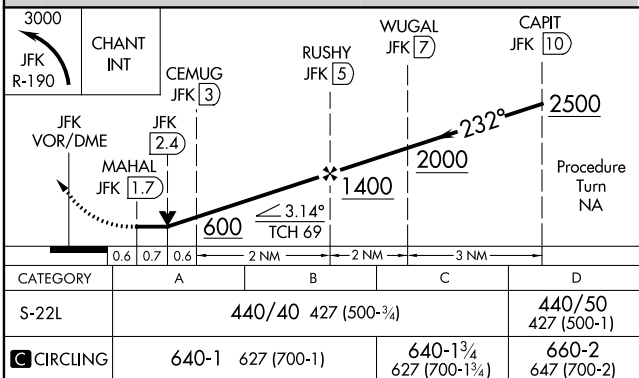
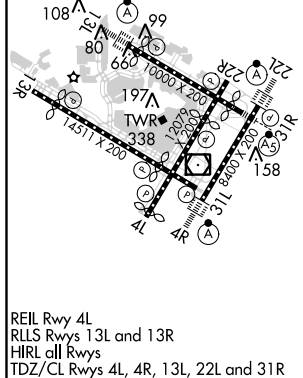
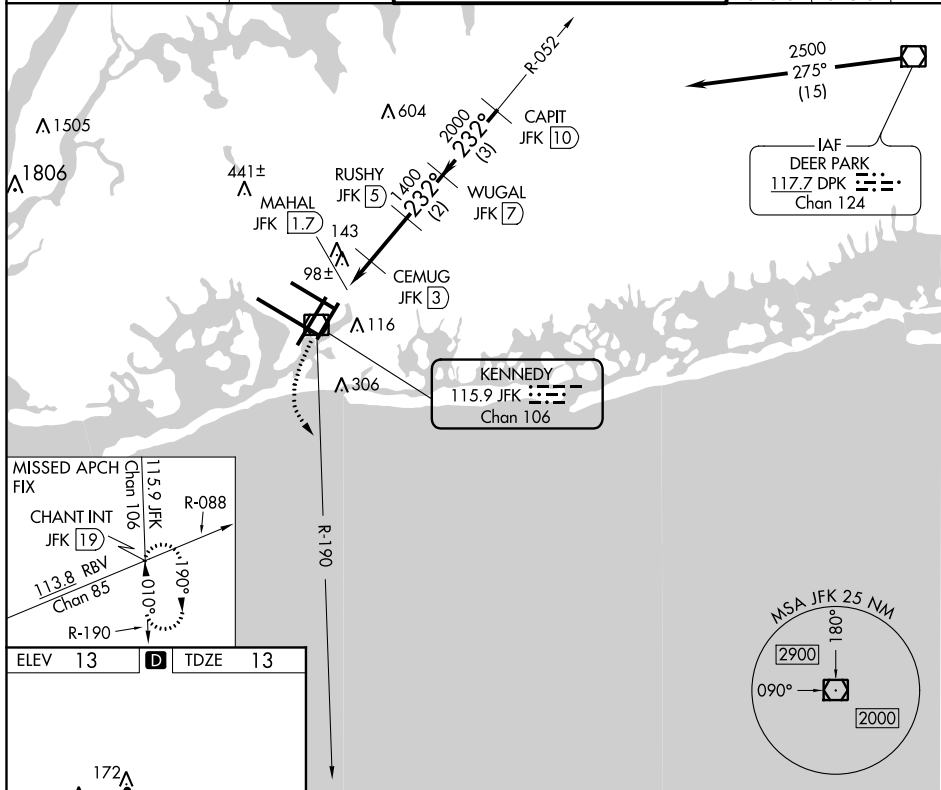


VOR/DME RWY 22L
JOHN F KENNEDY INTL (JFK)

ALSF-2

MISSED APPROACH: Climbing left turn to 3000 via JFK R-190 to CHANT INT/19 DME and hold.

D-ATIS			KENNEDY TOWER			GND CON	CLNC DEL	CPDLC
(ARR/DEP)	(ARR-NE)	(ARR-SW)	Rwys 4R/22L and 13L/31R	119.1	281.55	121.9	135.05	
128.725	117.7	115.4	Rwys 4L/22R and 13R/31L	123.9	281.55	348.6	348.6	



NE-2, 26 MAR 2020 to 23 APR 2020