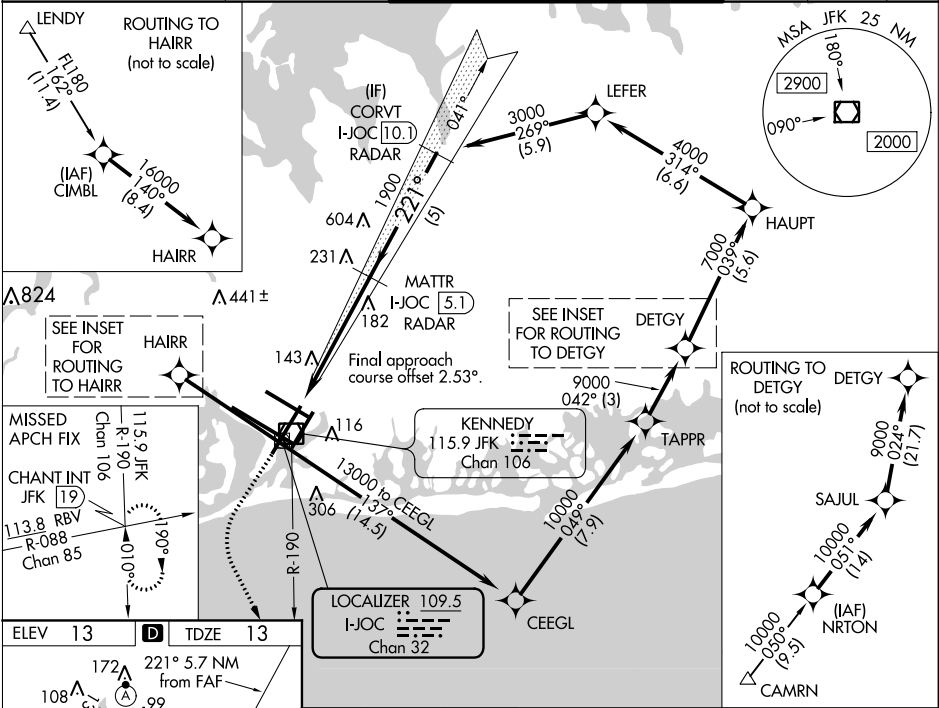


LOC/DME I-JOC	APP CRS	Rwy Idg	7795
109.5	221°	TDZE	13
Chan 32		Apt Elev	13

ILS or LOC RWY 22R
JOHN F KENNEDY INTL (JFK)

RNAV 1-GPS or RADAR required for procedure entry. From CAMRN, LENDY: RNAV 1-GPS required. DME or RADAR required.		MISSED APPROACH: Climb to 2000 then climbing left turn to 4000 on JFK VOR/DME R-190 to CHANT INT and hold.	
Simultaneous approach authorized.			

D-ATIS (ARR/DEP) (ARR-NE) (ARR-SW)	NEW YORK APP CON	KENNEDY TOWER	GND CON	CLNC DEL	CPDLC
128.725 117.7 115.4	128.125 269.0	Rwys 4R/22L and 13L/31R 119.1 281.55 Rwys 4L/22R and 13R/31L 123.9 281.55	121.9 348.6	135.05 348.6	



ELEV 13	D	TDZE 13
REIL Rwy 4L RLS Rws 13L and 13R HRL all Rws TDZ/CL Rws 4L, 4R, 13L, 22L and 31R FAF to MAP 5.7 NM		
Knots	60	90 120 150 180
Min:Sec	5:42	3:48 2:51 2:17 1:54

2000 4000 JFK R-190		CHANT INT
VGSI and ILS glidepath not coincident (VGSI Angle 3.00/TCH 77).		
MATTR I-JOC 5.1 RADAR		CORVT I-JOC 10.1 RADAR
1900 221° 3000		GS 3.00° TCH 59
5.7 NM 5 NM		
CATEGORY	A	B C D
S-ILS 22R	263/40	250 (300-3%)
S-LOC 22R	460/55 447 (500-1)	460-13/8 447 (500-13/8)
CIRCLING	640-1 627 (700-1)	680-13/4 667 (700-13/4) 680-2 667 (700-2)