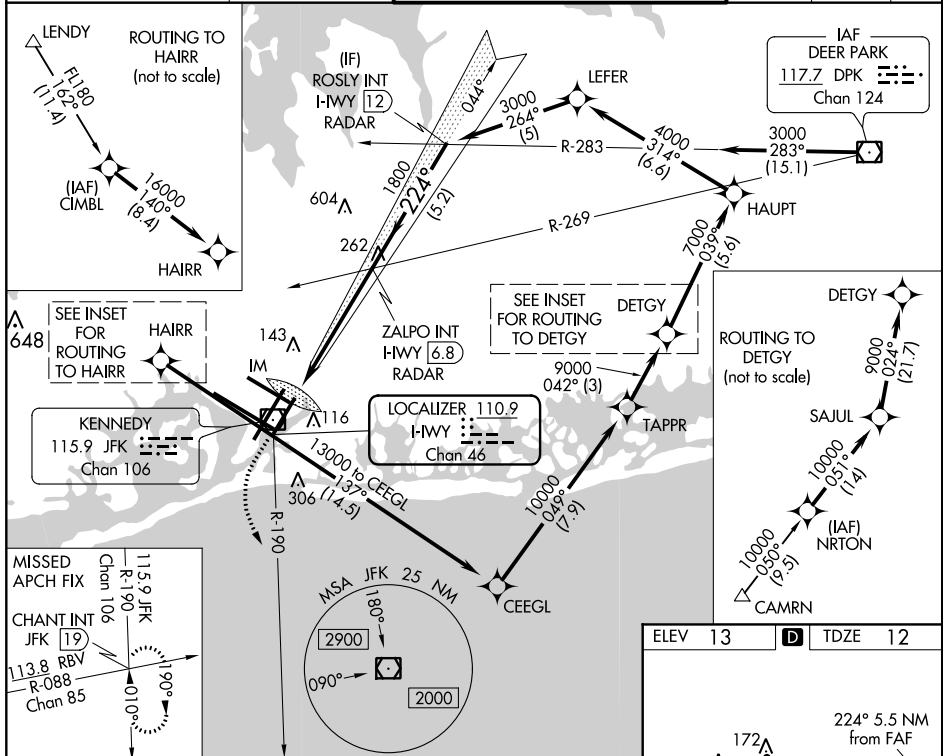


ILS or LOC RWY 22L  
JOHN F KENNEDY INTL (JFK)

**MISSED APPROACH:** Climb to 500 then climbing left turn to 3000 on JFK VOR/DME R-190 to CHANT INT/19 DME and hold.



ILS or LOC RWY 22L

NE-2, 26 MAR 2020 to 23 APR 2020