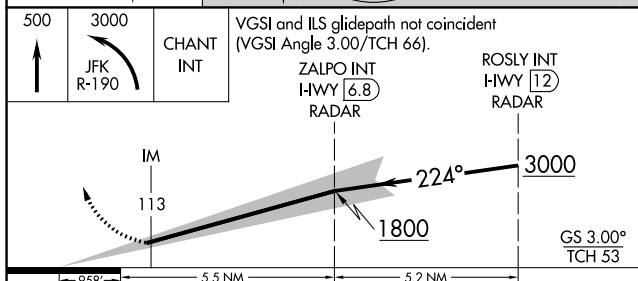


ILS RWY 22L (CAT II & III)  
JOHN F KENNEDY INTL (JFK)

**MISSED APPROACH:** Climb to 500 then climbing left turn to 3000 on JFK VOR/DME R-190 to CHANT INT/19 DME and hold.

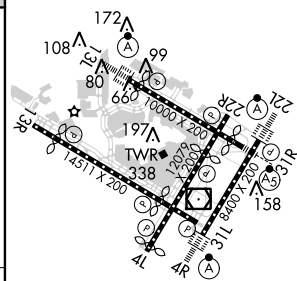
[illegible]

ELEV	13	<b>D</b>	TDZE	12
------	----	----------	------	----



CATEGORY	A	B	C	D
S-ILS 22L	CAT II RA 113/12 100 DA 112			
S-ILS 22L	CAT III RVR 06			

CATEGORY II & III ILS - SPECIAL AIRCREW  
& AIRCRAFT CERTIFICATION REQUIRED



REIL Rwy 4L  
RLLS Rwy 13L and 13R  
HIRL all Rwy  
TDZ/CL Rwy 4L, 4R, 13L, 22L and 31R