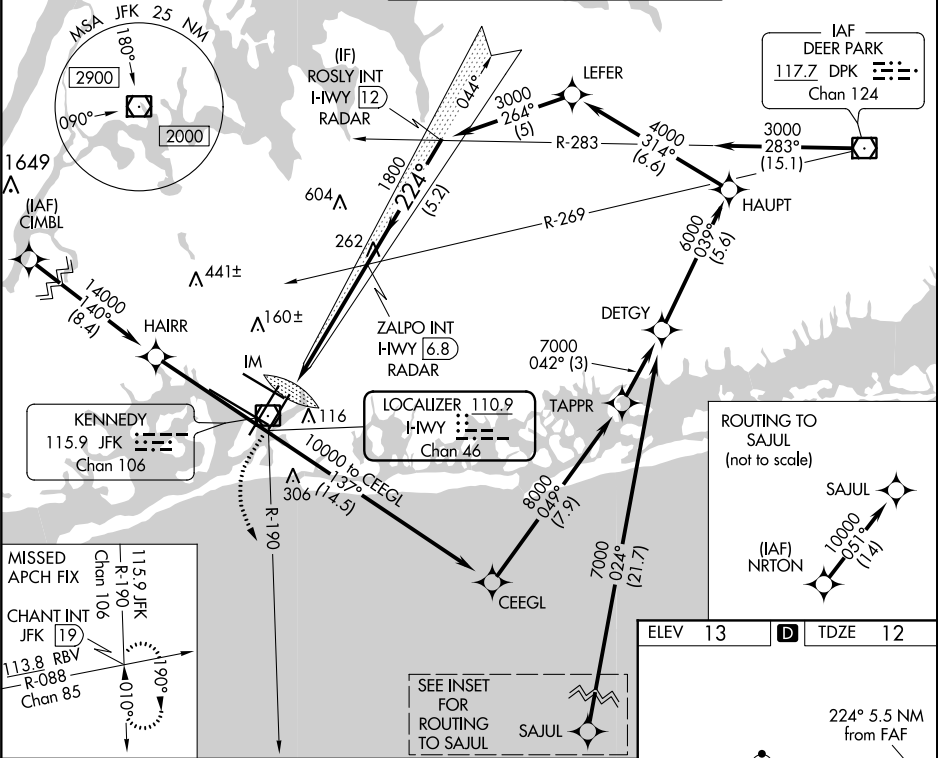


LOC/DME I-WWY	APP CRS	Rwy Idg	8400
110.9	224°	TDZE	12
Chan 46		Apt Elev	13

ILS or LOC RWY 22L
JOHN F KENNEDY INTL (JFK)

RNAV 1-GPS or RADAR required for procedure entry. From CIMBL, NRTON: RNAV 1-GPS required.	ALSIF-2 	MISSED APPROACH: Climb to 500 then climbing left turn to 3000 on JFK VOR/DME R-190 to CHANT INT/19 DME and hold.
Simultaneous approach authorized.		

D-ATIS (ARR/DEP) (ARR-NE) (ARR-SW)	NEW YORK APP CON	KENNEDY TOWER Rwys 4R/22L and 13L/31R	119.1 281.55	GND CON	CLNC DEL	CPDLC
128.725 117.7 115.4	128.125 269.0	Rwys 4L/22R and 13R/31L	123.9 281.55	121.9 348.6	135.05 348.6	



500	3000	CHANT INT	VGSI and ILS glidepath not coincident (VGSI Angle 3.00°/TCH 66°).	ROSLY INT I-WWY 12 RADAR
			ZALPO INT I-WWY 6.8 RADAR	
* LOC only.	* I-WWY 1.4	* I-WWY 2.8	1800	3000
	IM		224°	GS 3.00° TCH 53
0.2	1.2 NM	4.1 NM	5.2 NM	
CATEGORY	A	B	C	D
S-ILS 22L		212/18	200 (200-1/2)	
S-LOC 22L	520/24	508 (600-1/2)	520/55	508 (600-1)
CIRCLING	640-1	627 (700-1)	680-1 3/4 667 (700-1 3/4)	680-2 667 (700-2)

ELEV 13	D	TDZE 12
REIL Rwy 4L RLS Rwys 13L and 13R HIRL all Rwys TDZ/CL Rwys 4L, 4R, 13L, 22L and 31R FAF to MAP 5.5 NM		
Knots	60	90 120 150 180
Min:Sec	5:30	3:40 2:45 2:12 1:50

NE-2, 24 MAR 2022 to 21 APR 2022

NE-2, 24 MAR 2022 to 21 APR 2022