

WAAS CH <b>97318</b> <b>W22A</b>	APP CRS <b>224°</b>	Rwy Idg TDZE <b>12</b> Apt Elev <b>13</b>
--	------------------------	---

RNAV (GPS) Y RWY 22L

JOHN F KENNEDY INTL (JFK)

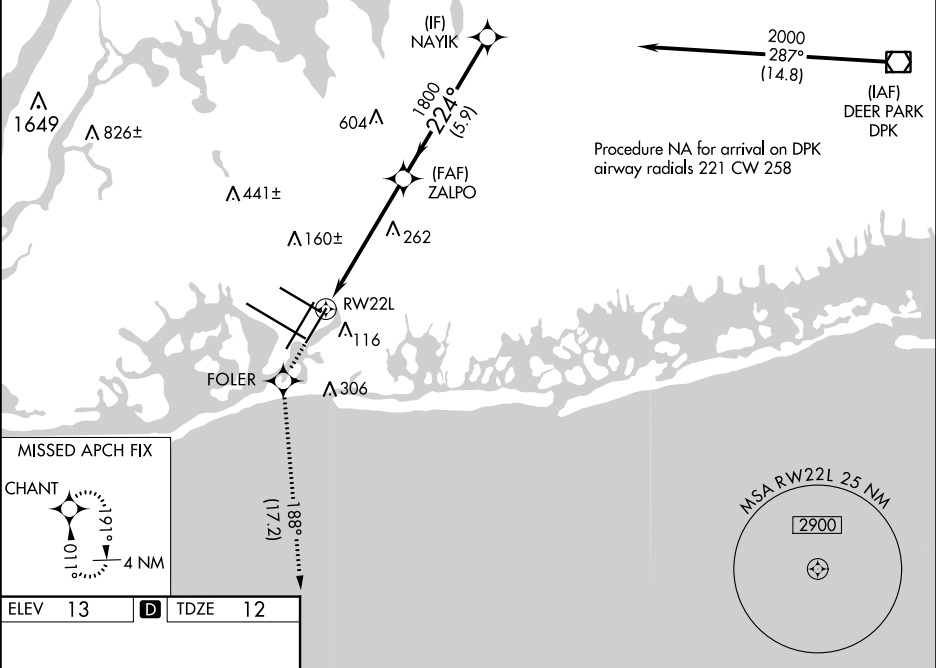
RNP APCH.

Simultaneous approach authorized. LNAV procedure NA during simultaneous operations. Use of FD or AP providing RNAV track guidance required during simultaneous operations. For uncompensated Baro-VNAV systems, LNAV/VNAV NA below -12°C or above 54°C. For inop ALS, increase LNAV/VNAV all Cats visibility to RVR 6000.

ALS F-2

MISSED APPROACH: Climb to 3000 direct FOLER and on track 188° to CHANT and hold.

D-ATIS (ARR/DEP) (ARR-NE) (ARR-SW)	NEW YORK APP CON	KENNEDY TOWER	GND CON	CLNC DEL	CPDLC
<b>128.725 117.7 115.4</b>	<b>128.125 269.0</b>	Rwys 4R/22L and 13L/31R <b>119.1 281.55</b> Rwys 4L/22R and 13R/31L <b>123.9 281.55</b>	<b>121.9 348.6</b>	<b>135.05 348.6</b>	



3000 ↑	FOLER ✦	fr 188° ✦	CHANT ✦
-----------	------------	--------------	------------

\*LNAV only.

\*1.5 NM to RW22L

RW22L

ZALPO 1800

224°

1800

NAYIK 2000

GP 3.00° TCH 53

1.5 4 NM 5.9 NM

CATEGORY	A	B	C	D
LPV DA	269/18 257 (300-½)			
LNAV/VNAV DA	419/50 407 (500-1)			
LNAV MDA	560/24 548 (600-½)		560/60 548 (600-1¼)	
<b>C</b> CIRCLING	640-1 627 (700-1)		680-1¾ 667 (700-1¾) 680-2 667 (700-2)	

RLS Rwy's 13L and 13R

HIRL all Rwy's

TDZ/CL Rwy's 4L, 4R, 13L, 22L and 31R