

LOC/DME 1-WY	APP CRS	Rwy Idg	<b>8400</b>
<b>110.9</b>		TDZE	<b>12</b>
Chan <b>46</b>	<b>224°</b>	Apt Elev	<b>13</b>

**ILS RWY 22L (CAT II & III)**  
JOHN F KENNEDY INTL (JFK)

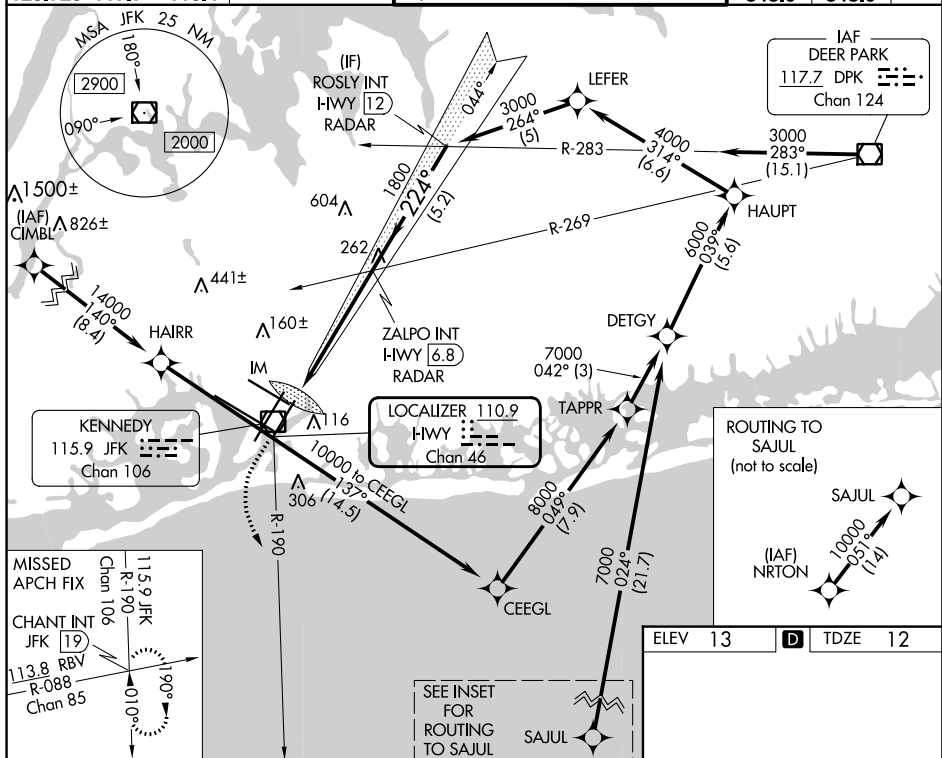
RNAV 1-GPS or RADAR required for procedure entry.  
From CIMBL, NRTON: RNAV 1-GPS required.

ALSF-2

**MISSED APPROACH:** Climb to 500 then climbing left turn to 3000 on JFK VOR/DME R-190 to CHANT INT/19 DME and hold.

**T** Simultaneous approach authorized.

D-ATIS (ARR/DEP) (ARR-NE) (ARR-SW)			NEW YORK APP CON		KENNEDY TOWER			GND CON	CLNC DEL	CPDLC
128.725	117.7	115.4	128.125	269.0	Rwys 4R/22L and 13L/31R	119.1	281.55	121.9	135.05	
					Rwys 4L/22R and 13R/31L	123.9	281.55	348.6	348.6	



500 ↑	3000 JFK R-190	CHANT INT	VGS1 and ILS glidepath not coincident (VGS1 Angle 3.00°/TCH 66).			ROSLY INT I-HWY 12 RADAR
IM 113		ZALPO INT I-HWY 6.8 RADAR 1800		224°	3000	
958'		5.5 NM		5.2 NM		
GS 3.00° TCH 53						
CATEGORY	A	B	C	D		
S-ILS 22L	CAT II RA 113/12 100 DA 112					
S-ILS 22L	CAT III RVR 06					

CATEGORY II & III ILS - SPECIAL AIRCREW  
& AIRCRAFT CERTIFICATION REQUIRED

RLLS Rwy's 13L and 13R  
HRL all Rwy's  
TDZ/CL Rwy's 4L, 4R, 13L, 22L and 31R

ILS RWY 22L (CAT II & III)