

NEW YORK, NEW YORK

AL-610 (FAA)

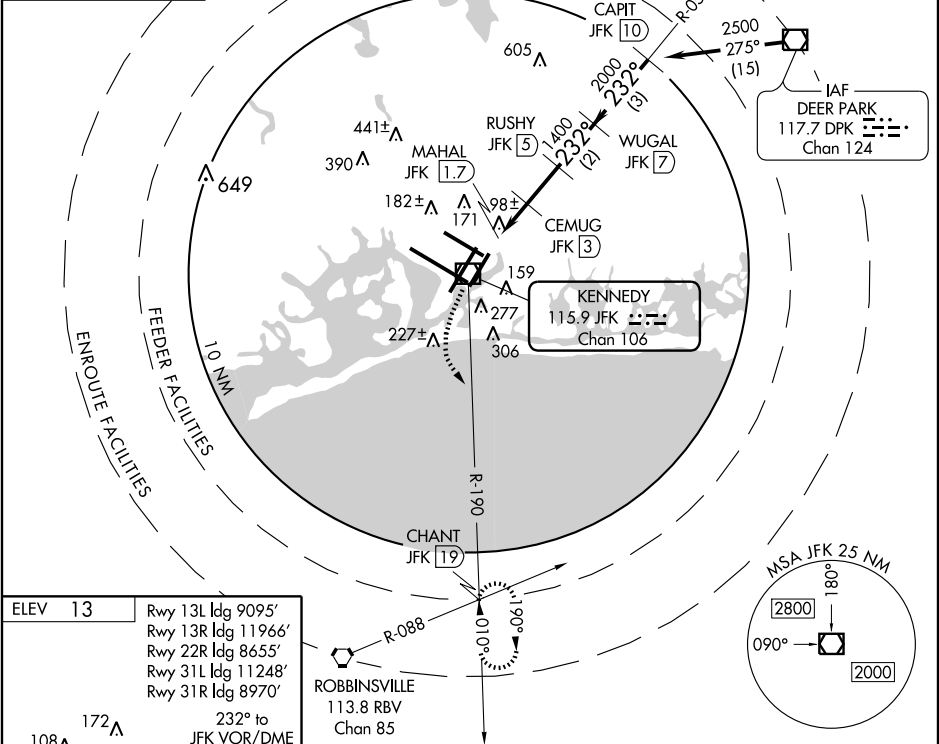
VOR/DME JFK	APP CRS	Rwy Idg	8400
115.9	232°	TDZE	13
Chan 106		Apt Elev	13

VOR/DME RWY 22L

NEW YORK / JOHN F. KENNEDY INTL (JFK)

	ALSF-2 	MISSED APPROACH: Climbing left turn to 3000 via JFK R-190 to CHANT Int/19 DME and hold.
---	---	--

ARR	ATIS (NE) (SW)	NEW YORK APP CON	KENNEDY TOWER	GND CON	CLNC DEL
128.725	117.7	127.4 269.0	Rwys 4R/22L and 13L/31R 119.1 281.55 Rwys 4L/22R and 13R/31L 123.9 281.55	121.9 348.6	135.05
DEP					
115.1					



ELEV 13	Rwy 13L Idg 9095'
	Rwy 13R Idg 11966'
	Rwy 22R Idg 8655'
	Rwy 31L Idg 11248'
	Rwy 31R Idg 8970'
	232° to JFK VOR/DME
	TDZE 13
	REIL Rwy 4L
	HIRL Rwys 4L-22R
	4R-22L, 13R-31L, and 13L-31R
	TDZ/CL Rwys 4R, 13L, 31R and 22L
Knots	60 90 120 150 180
Min:Sec	

3000	CHANT INT	CEMUG JFK [3]	RUSHY JFK [5]	WUGAL JFK [7]	CAPIT JFK [10]
JFK R-190 115.9		JFK [2.4]			
VOR/DME MAHAL JFK [1.7]					
600					
0.6 0.7 0.6					
2 NM					
2 NM					
3 NM					
Procedure Turn NA					
CATEGORY	A	B	C	D	
S-22L	440/24 427 (500-½)		440/40 427 (500-¾)	440/50 427 (500-1)	
CIRCLING	640-1 627 (700-1)		640-1¾ 627 (700-1¾)	640-2 627 (700-2)	

NEW YORK, NEW YORK
Amdt 4D 07018

NEW YORK / JOHN F. KENNEDY INTL (JFK)
40°38'N - 73°47'W

VOR/DME RWY 22L

NE-2, 15 MAR 2007 to 12 APR 2007

NE-2, 15 MAR 2007 to 12 APR 2007