

AL-610 (FAA)

WAAS CH <b>97318</b> <b>W22A</b>	APP CRS <b>225°</b>	Rwy Idg <b>8400</b> TDZE <b>13</b> Apt Elev <b>13</b>
--	------------------------	---

## RNAV (GPS) RWY 22L

NEW YORK / JOHN F. KENNEDY INTL (JFK)



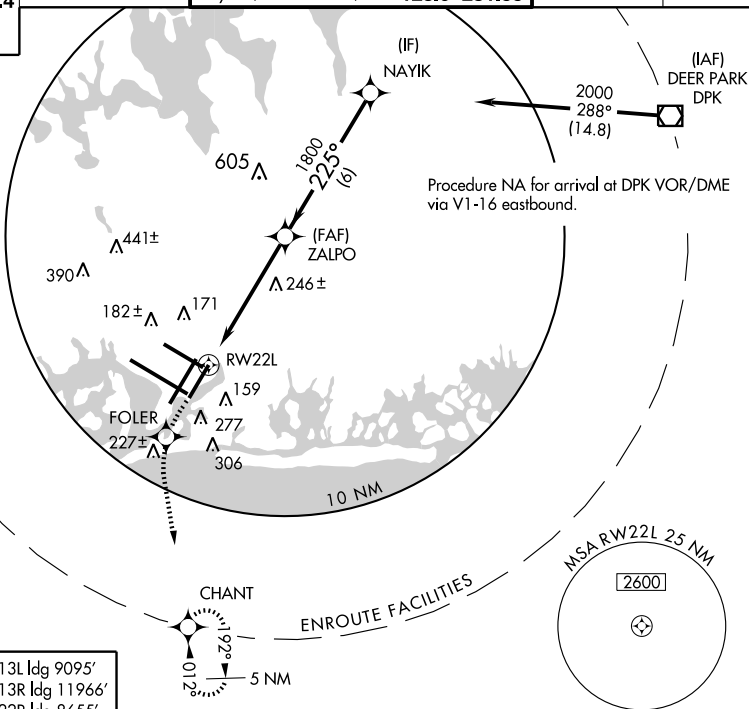
DME/DME RNP -0.3 NA. Baro-VNAV NA  
below -15°C (5°F). For inoperative ALSF-2,  
increase LPV all CAT's visibility to RVR 4000.

ALSF-2

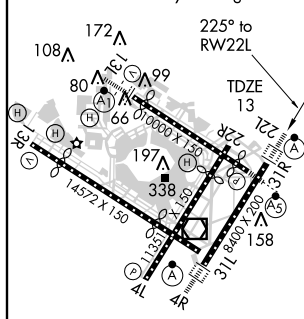


**MISSED APPROACH:** Climb to 3000 direct FOLER and via 189° track to CHANT and hold.

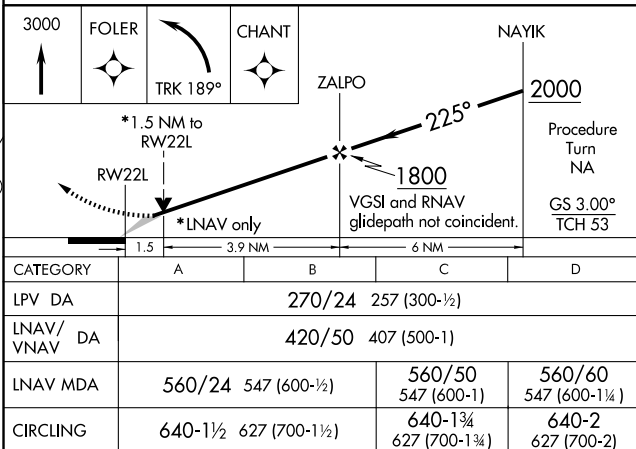
ARR	ATIS (NE)	(SW)	NEW YORK APP CON		KENNEDY TOWER		GND CON	CINC DEL
128.725	117.7	115.4	127.4	269.0	Rwys 4R/22L and 13L/31R	119.1 281.55	121.9 348.6	135.05
DEP					Rwys 4L/22R and 13R/31L	123.9 281.55		
115.1								



ELEV 13	Rwy 13L Idg 9095'
	Rwy 13R Idg 11966'
	Rwy 22R Idg 8655'
	Rwy 31L Idg 11248'
	Rwy 31R Idg 8970'



TDZ/CL Rwy 4R, 13L, 31R and 22L  
REIL Rwy 4L  
HIRL Rwy 4L-22R,  
4R-22L, 13R-31L, and 13L-31R



NEW YORK, NEW YORK

Amdt 1 07046

NEW YORK / JOHN F. KENNEDY INTL (JFK)

40°38'N - 73°47'W

## RNAV (GPS) RWY 22L

NE-2, 15 MAR 2007 to 12 APR 2007

NE-2, 15 MAR 2007 to 12 APR 2007