

AL-610 (FAA)

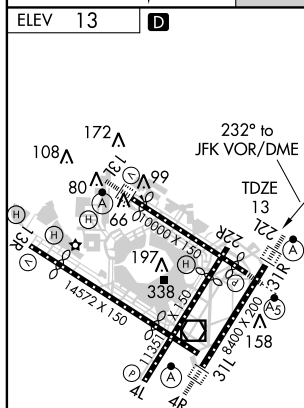
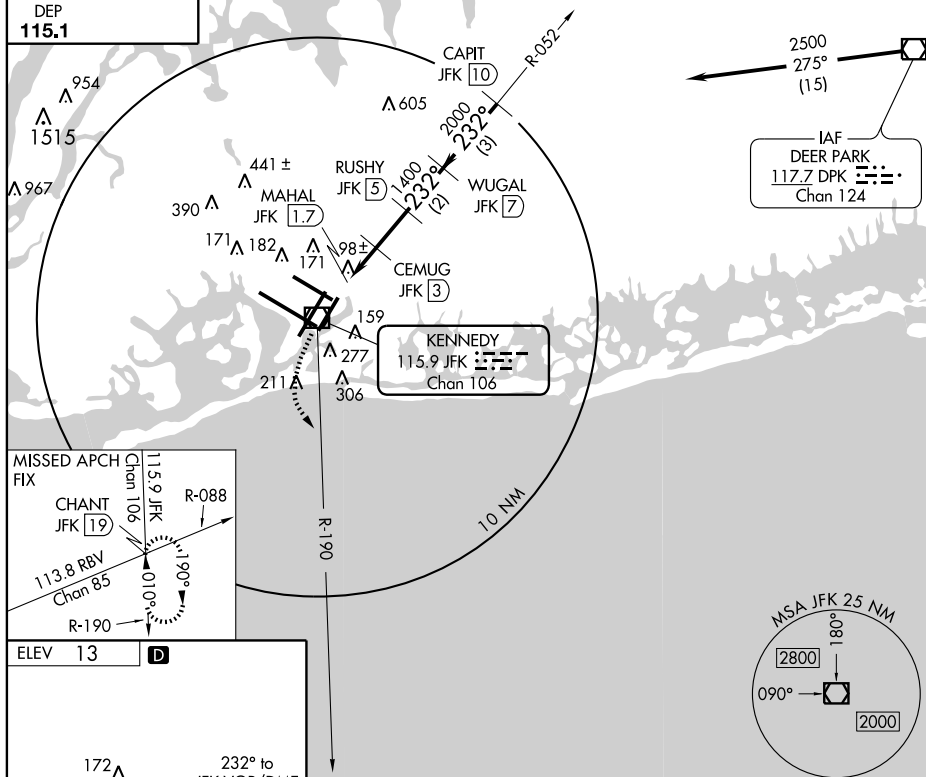
VOR/DME JFK 115.9 Chan 106	APP CRS 232°	Rwy Idg 8400 TDZE 13 Apt Elev 13
--	------------------------	---

VOR/DME RWY 22L
NEW YORK / JOHN F. KENNEDY INTL (JFK)



MISSED APPROACH: Climbing left turn to 3000
via JFK R-190 to CHANT Int/19 DME and hold.

	ARR	ATIS (NE)	(SW)	NEW YORK APP CON	KENNEDY TOWER	GND CON	CLNC DEL
	128.725	117.7	115.4	127.4 269.0	Rwys 4R/22L and 13L/31R 119.1 281.55 Rwys 4L/22R and 13R/31L 123.9 281.55	121.9 348.6	135.05 348.6
	DEP 115.1						



3000
JFK R-190
115.9

CHANT INT

CEMUG
JFK (3)

JFK (2.4)

MAHAL
JFK (1.7)

VOR/DME

232°

2500

Procedure Turn
NA

1400

2000

600

3.14°

TCH 69

0.6 0.7 2 NM 2 NM 3 NM

CATEGORY	A	B	C	D
S-22L	440/24 427 (500-½)		440/40 427 (500-¾)	440/50 427 (500-1)
CIRCLING	640-1 627 (700-1)		640-1¼ 627 (700-1¾)	640-2 627 (700-2)

REIL Rwy 4L
HIRL Rwys 4L-22R
4R-22L, 13R-31L, and 13L-31R
TDZ/CL Rwys 4R, 13L, 31R and 22L

NEW YORK, NEW YORK
Amdt 4D 09015

NEW YORK / JOHN F. KENNEDY INTL (JFK)
VOR/DME RWY 22L

40°38'N - 73°47'W

NE-2: 12 MAR 2009 to 09 APR 2009