

AL-610 (FAA)

LOC/DME I-JOC <b>109.5</b> Chgn <b>32</b>	APP CRS <b>222°</b>	Rwy Idg <b>8655</b> TDZE <b>13</b> Apt Elev <b>13</b>
---	------------------------	---

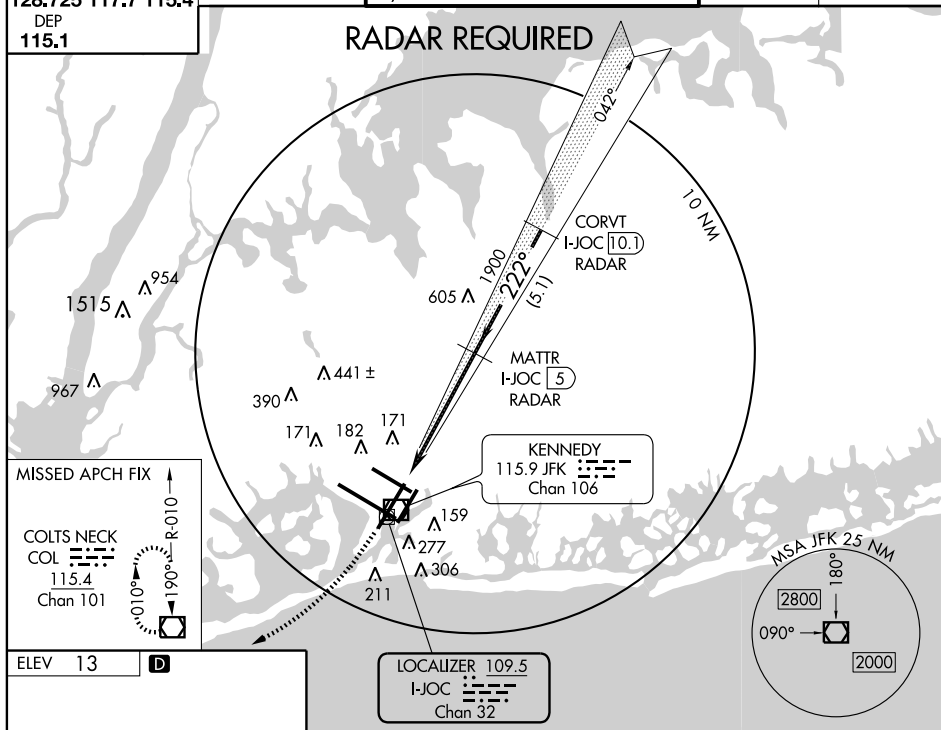
ILS RWY 22R

NEW YORK / JOHN F. KENNEDY INTL (JFK)



**MISSED APPROACH:** Climb to 700 then climbing right turn to 4000 direct COL VOR/DME and hold.

ARR	ATIS (NE)	(SW)	NEW YORK APP CON		KENNEDY TOWER		GND CON		CLNC DEL	
128.725	117.7	115.4	127.4	269.0	Rwys 4R/22L and 13L/31R	119.1	281.55	121.9	348.6	135.05
DEP					Rwys 4L/22R and 13R/31L	123.9	281.55			348.6
115.1					RADAR REQUIRED					



700  
↑

4000  
↗

COL  
□  
115.4

MATTR  
I-JOC 5  
RADAR

CORVT  
I-JOC 10.1  
RADAR

1900

222°

3000\*

\*1900 when authorized by ATC.

1900

5.7 NM

5.1 NM

GS 3.00°  
TCH 59

CATEGORY	A	B	C	D
S-ILS 22R	263/40 250 (300-¾)			
S-LOC 22R	460/50	447 (500-1)	460/60 447 (500-1¼)	460-1½ 447 (500-1½)
CIRCLING	640-1	627 (700-1)	640-1¾ 627 (700-1¾)	640-2 627 (700-2)

NEW YORK, NEW YORK

Amdt 2 09071

NEW YORK / JOHN F. KENNEDY INTL (JFK)

40°38'N - 73°47'W

ILS RWY 22R

NE-2, 12 MAR 2009 to 09 APR 2009

NE-2: 12 MAR 2009 to 09 APR 2009