

NEW YORK, NEW YORK

AL-610 (FAA)

LOC/DME I-HWY	APP CRS	Rwy Idg	8400
<b>110.9</b>	<b>225°</b>	TDZE	<b>13</b>
Chan <b>46</b>		Apt Elev	<b>13</b>

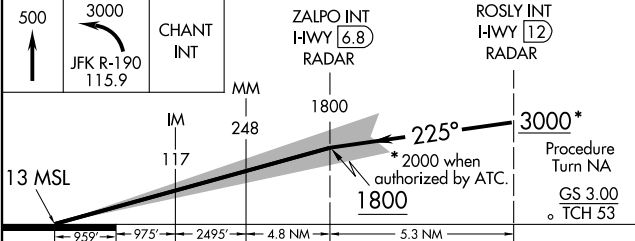
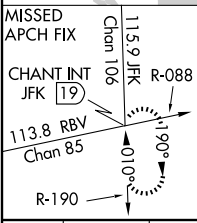
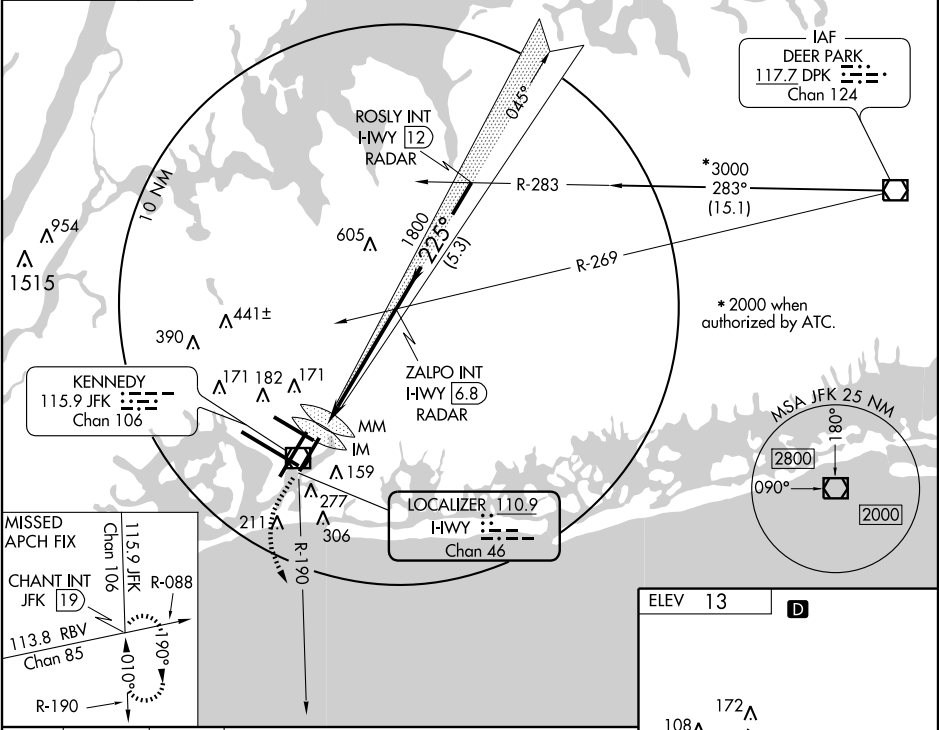
# ILS RWY 22L (CAT III)

NEW YORK/JOHN F. KENNEDY INTL (JFK)

**ALSIF-2**

MISSED APPROACH: Climb to 500 then climbing left turn to 3000 via JFK R-190 to CHANT Int/19 DME and hold.

ATIS	NEW YORK APP CON	KENNEDY TOWER	GND CON	CLNC DEL
ARR (NE) (SW)	<b>127.4 269.0</b>	Rwys 4R/22L and 13L/31R <b>119.1 281.55</b> Rwys 4L/22R and 13R/31L <b>123.9 281.55</b>	<b>121.9 348.6</b>	<b>135.05 348.6</b>
DEP <b>115.1</b>				



CATEGORY	A	B	C	D
S-ILS 22L		CAT IIIA RVR 07		
S-ILS 22L		CAT IIIB RVR 06		
S-ILS 22L		CAT IIIC NA		

**CATEGORY III ILS - SPECIAL AIRCREW & AIRCRAFT CERTIFICATION REQUIRED**

