

NEW YORK, NEW YORK

AL-610 (FAA)

VOR/DME JFK	APP CRS	Rwy Idg	8400
115.9	232°	TDZE	13
Chan 106		Apt Elev	13

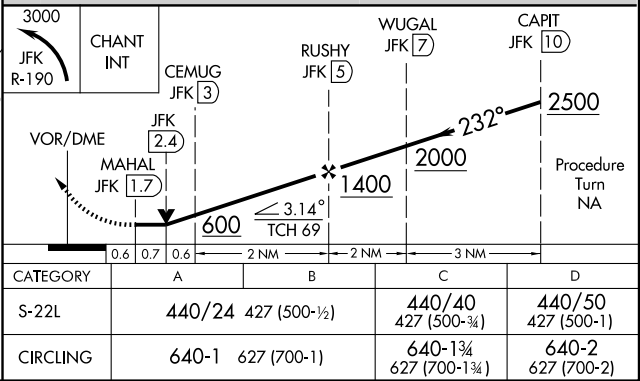
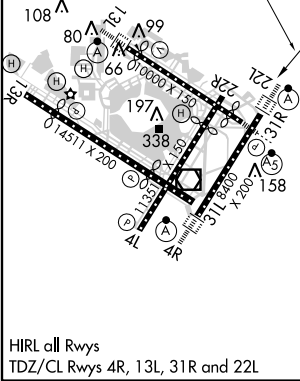
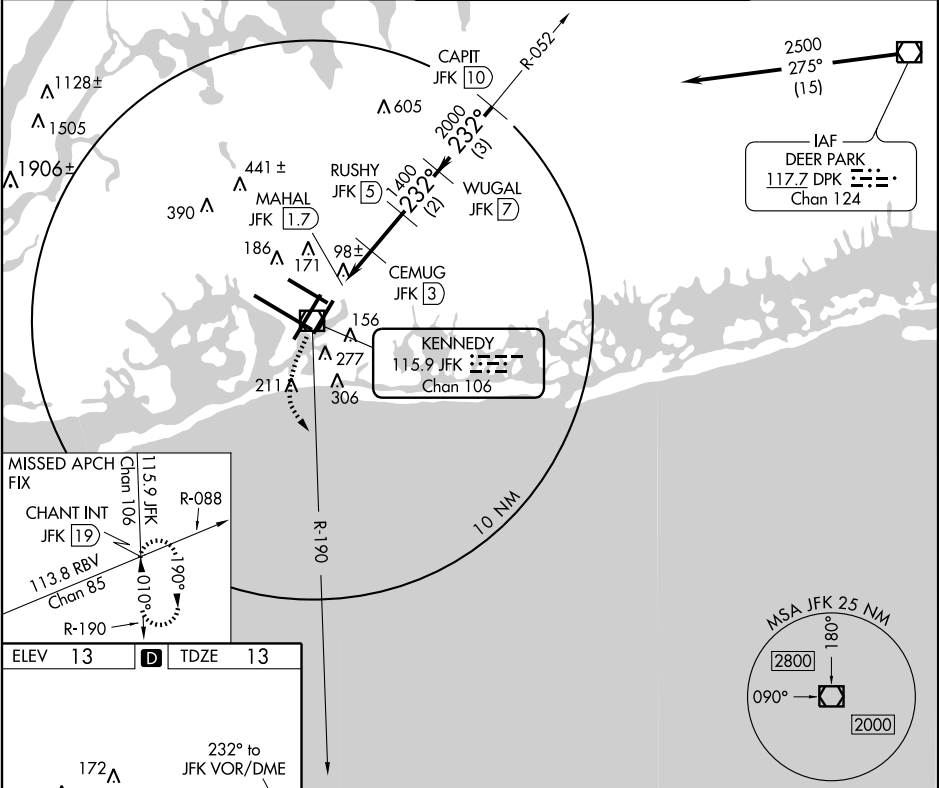
VOR/DME RWY 22L

NEW YORK / JOHN F. KENNEDY INTL (JFK)

ALSF-2

MISSED APPROACH: Climbing left turn to 3000 via JFK R-190 to CHANT INT/19 DME and hold.

ATIS (ARR-NE)	NEW YORK APP CON	KENNEDY TOWER	GND CON	CLNC DEL
128.725 117.7 115.4	127.4 269.0	Rwys 4R/22L and 13L/31R 119.1 281.55 Rwys 4L/22R and 13R/31L 123.9 281.55	121.9 348.6	135.05 348.6



NEW YORK, NEW YORK
Amdt 4D 11069

NEW YORK / JOHN F. KENNEDY INTL (JFK)
VOR/DME RWY 22L

40°38'N - 73°47'W

NE-2, 10 MAR 2011 to 07 APR 2011

NE-2, 10 MAR 2011 to 07 APR 2011