



LOC/DME Fwy 110.9 Chan 46	APP CRS 225°	Rwy Idg 8400 TDZE 13 Apt Elev 13
-----------------------------------------------	------------------------	-------------------------------------------------------------

ILS RWY 22L (CAT III)
NEW YORK/JOHN F. KENNEDY INTL (JFK)

				MISSED APPROACH: Climb to 500 then climbing left turn to 3000 via JFK R-190 to CHANT INT/19 DME and hold.			
ATIS (ARR-NE) (ARR-SW)		NEW YORK APP CON		KENNEDY TOWER		GND CON	CLNC DEL
128.725	117.7 115.4	127.4 269.0	Rwy's 4R/22L and 13L/31R Rwy's 4L/22R and 13R/31L		119.1 281.55 123.9 281.55	121.9 348.6	135.05 348.6

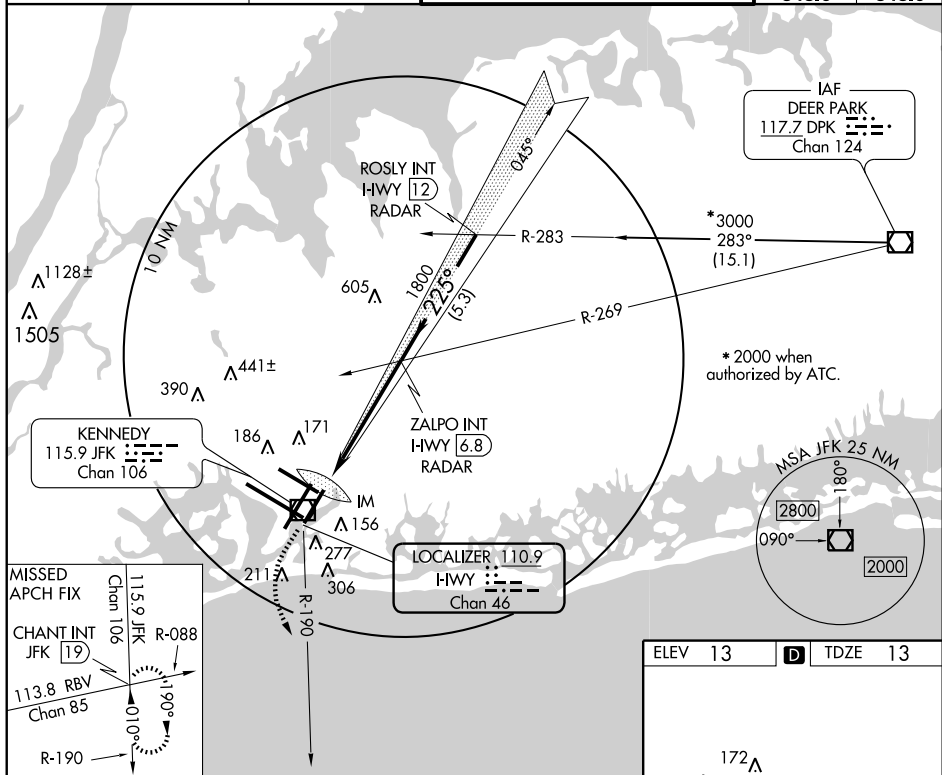


Diagram illustrating the Category III ILS approach for Runway 190 at JFK. The diagram shows a 3000-foot MSL ceiling, a 13 MSL decision height, and a 3000-foot* target altitude. The approach is divided into segments A, B, and C, with distances of 5.2 NM and 5.3 NM. The final approach segment is 1800 feet MSL. The diagram also shows the 1800-foot MSL decision height and the 3000-foot* target altitude. The diagram includes a scale bar for 5.2 NM and 5.3 NM. The diagram also shows the 1800-foot MSL decision height and the 3000-foot* target altitude. The diagram includes a scale bar for 5.2 NM and 5.3 NM.

CATEGORY	A	B	C	D
S-ILS 22L		CAT IIIa	RVR 07	
S-ILS 22L		CAT IIIb	RVR 06	
S-ILS 22L		CAT IIIc	NA	

CATEGORY III ILS - SPECIAL AIRCREW & AIRCRAFT CERTIFICATION REQUIRED

H1R1 all Rwws
TDZ/CL Rwws 4R, 13L, 31R and 22L