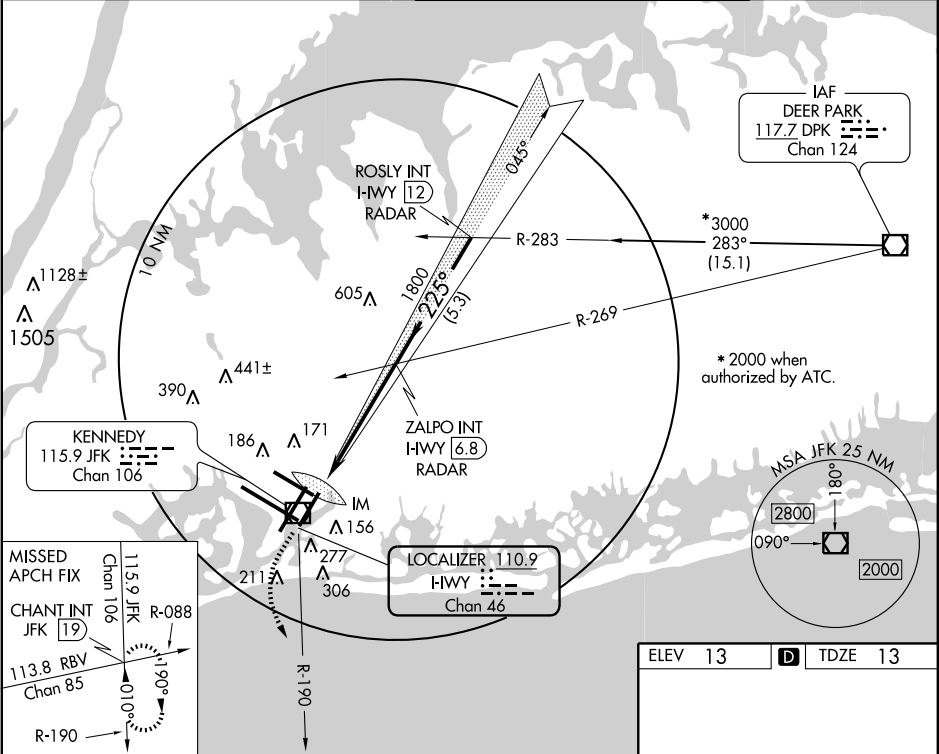


LOC/DME I-HWY	APP CRS	Rwy Idg	8400
<b>110.9</b>	<b>225°</b>	TDZE	<b>13</b>
Chan <b>46</b>		Apt Elev	<b>13</b>

**ILS RWY 22L (CAT II)**  
NEW YORK / JOHN F. KENNEDY INTL (JFK)

<b>ALSIF-2</b>	MISSED APPROACH: Climb to 500 then climbing left turn to 3000 via JFK R-190 to CHANT INT/19 DME and hold.
----------------	---

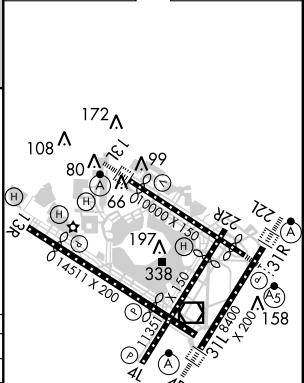
ATIS (ARR-NE)	(ARR-SW)	NEW YORK APP CON	KENNEDY TOWER	GND CON	CLNC DEL
<b>128.725</b>	<b>117.7</b>	<b>115.4</b>	Rwys 4R/22L and 13L/31R <b>119.1 281.55</b> Rwys 4L/22R and 13R/31L <b>123.9 281.55</b>	<b>121.9 348.6</b>	<b>135.05 348.6</b>



500	3000	CHANT INT	ZALPO INT I-HWY 6.8	ROSLY INT I-HWY 12
JFK R-190				
13 MSL	RA 113	IM	1800	225°
959'	891'	5.3 NM	5.3 NM	3000*
CATEGORY	A	B	C	D
S-ILS 22L	RA 113/12 100 DA 113			

**CATEGORY II ILS - SPECIAL AIRCREW  
& AIRCRAFT CERTIFICATION REQUIRED**

ELEV 13	<b>D</b>	TDZE 13
---------	----------	---------



HIRL all Rwws  
TDZ/CL Rwws 4R, 13L, 31R and 22L

NE-2, 10 MAR 2011 to 07 APR 2011

NE-2, 10 MAR 2011 to 07 APR 2011