

AL-610 (FAA)

VOR/DME JFK <b>115.9</b> Chan <b>106</b>	APP CRS <b>232°</b>	Rwy Idg <b>8400</b> TDZE <b>13</b> Apt Elev <b>13</b>
--	------------------------	---

VOR/DME RWY 22L

NEW YORK / JOHN F. KENNEDY INTL (JFK)

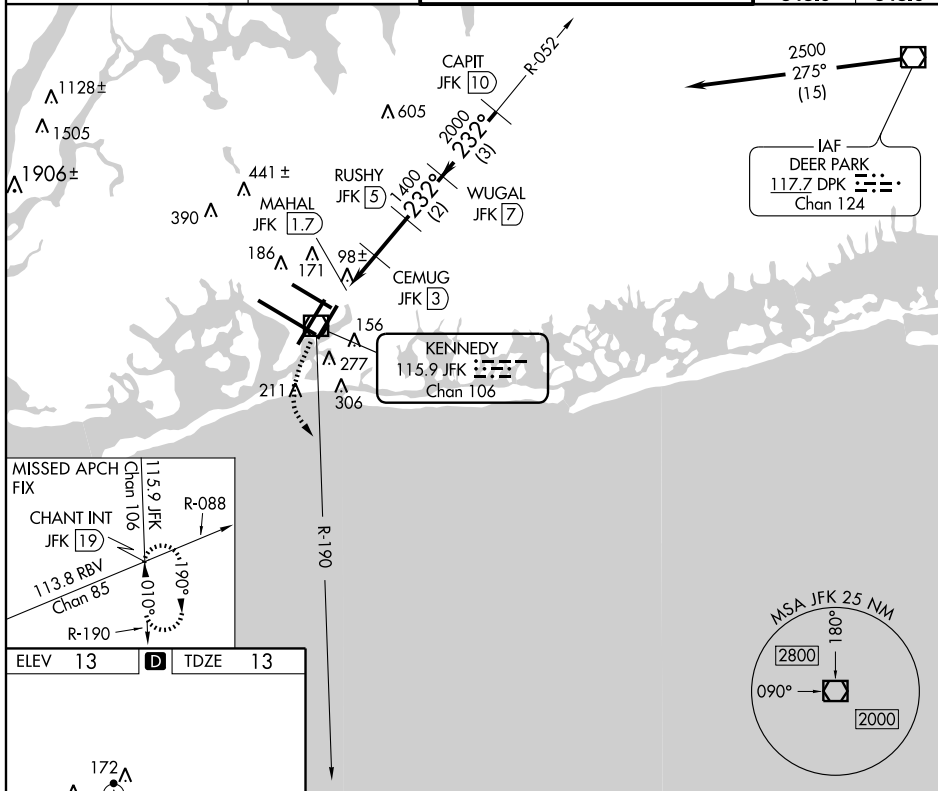


ALSF-2

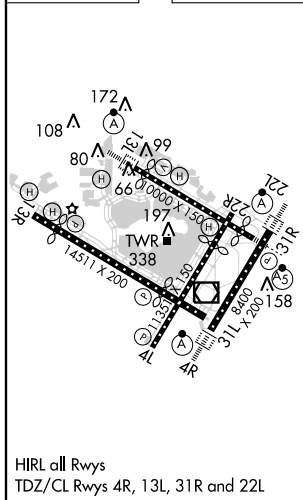


**MISSED APPROACH:** Climbing left turn to 3000  
via JFK R-190 to CHANT INT/19 DME and hold.

ATIS (ARR-NE) (ARR-SW)		NEW YORK APP CON		KENNEDY TOWER		GND CON	CLNC DEL
128.725	117.7	115.4	127.4	269.0	Rwys 4R/22L and 13L/31R Rwys 4L/22R and 13R/31L	119.1 281.55 123.9 281.55	121.9 135.05 348.6 348.6



ELEV	13	<b>D</b>	TDZE	13
------	----	----------	------	----



3000  
JFK  
R-190

CHANT INT

CEMUG JKF 3

RUSHY JKF 5

WUGAL JKF 7

CAPIT JKF 10

VOR/DME

JFK 2.4

MAHAL JKF 1.7

2500

232°

1400

2000

600

3.14°

TCH 69

Procedure Turn NA

	0.6	0.7	0.6	2 NM	2 NM	3 NM	
CATEGORY	A			B	C		D
S-22L	440/24 427 (500-½)				440/40 427 (500-¾)		440/50 427 (500-1)
CIRCLING	640-1 627 (700-1)				640-1¼ 627 (700-1¾)		640-2 627 (700-2)

NEW YORK, NEW YORK  
Amdt 4D 11349

NEW YORK / JOHN F. KENNEDY INTL (JFK)

VOR/DME RWY 22L

40°38'N-73°47'W

NE-2, 08 MAR 2012 to 05 APR 2012

NE-2. 08 MAR 2012 to 05 APR 2012