

WAAS CH 97318 W22A	APP CRS 225°	Rwy Idg 8400 TDZE 13 Apt Elev 13
--	------------------------	---

RNAV (GPS) Y RWY 22L

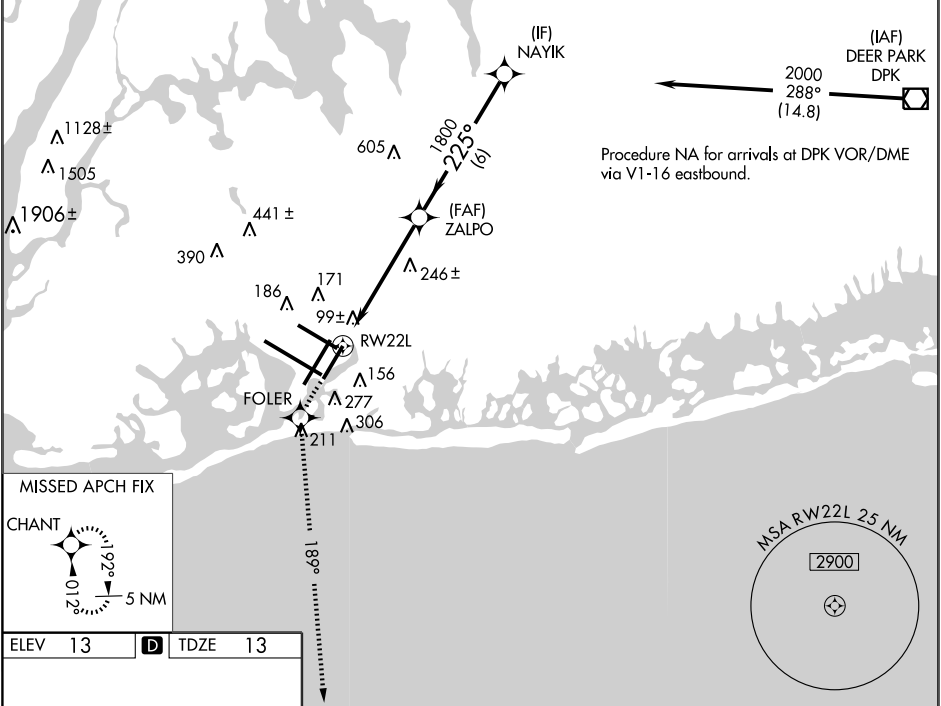
NEW YORK / JOHN F. KENNEDY INTL (JFK)

▼ For uncompensated Baro-VNAV systems, LNAV/VNAV NA below -13°C (8°F) or above 49°C (120°F), DME/DME RNP-0.3 NA. Simultaneous approach authorized with Rwy 22R. LNAV procedure NA during simultaneous operations. Use of FD or AP providing RNAV track guidance required during simultaneous operations.

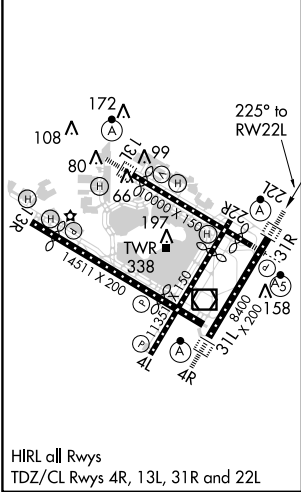
ALSF-2

MISSED APPROACH: Climb to 3000 direct FOLER and via 189° track to CHANT and hold.

ATIS (ARR-NE) (ARR-SW) 128.725 117.7 115.4	NEW YORK APP CON 127.4 269.0	KENNEDY TOWER Rwys 4R/22L and 13L/31R 119.1 281.55 Rwys 4L/22R and 13R/31L 123.9 281.55	GND CON 121.9 348.6	CLNC DEL 135.05 348.6
---	--	---	-------------------------------	---------------------------------



ELEV 13	D	TDZE 13
---------	----------	---------



3000	FOLER	tr 189°	CHANT	VGSI and RNAV glidepath not coincident (VGSI Angle 3.00/TCH 66).
*LNAV only				
*1.5 NM to RWY 22L				
RWY 22L				
ZALPO				
NAYIK				
2000				
Procedure Turn NA				
GS 3.00°				
TCH 53				
CATEGORY	A	B	C	D
LPV DA	270/24 257 (300-½)			
LNAV/VNAV DA	420/50 407 (500-1)			
LNAV MDA	560/24 547 (600-½)		560/50 547 (600-1)	
CIRCLING	640-1 627 (700-1)		640-1¾ 627 (700-1¾)	
			560/60 547 (600-1¼)	
			640-2 627 (700-2)	