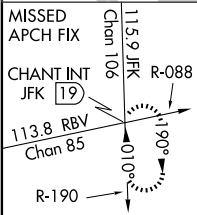
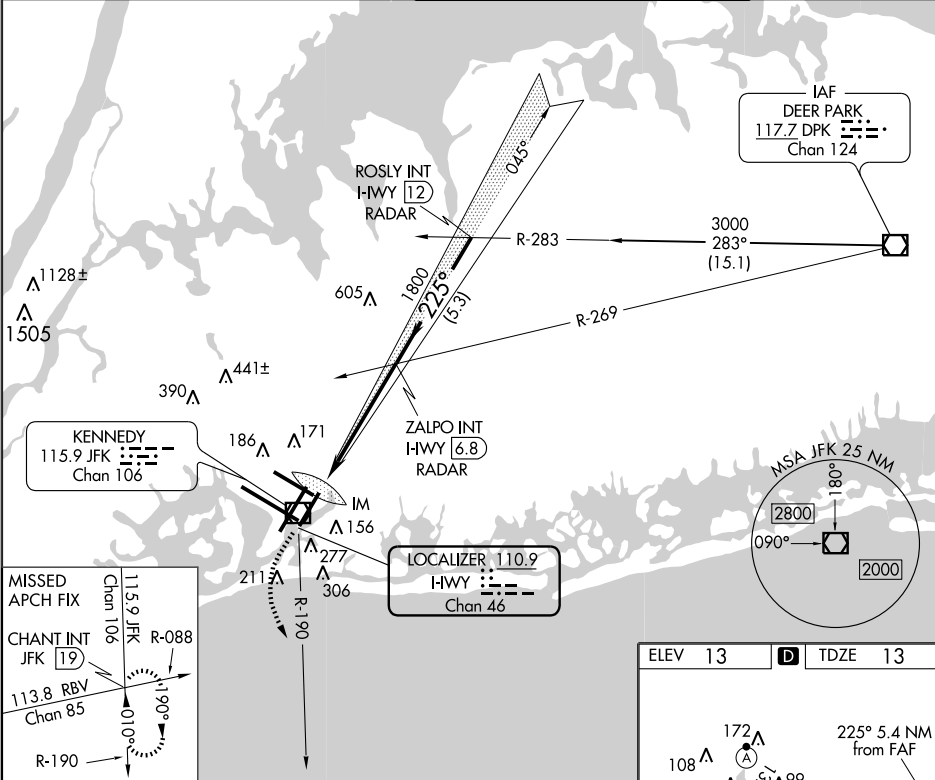


LOC/DME I-HWY	APP CRS	Rwy ldg
<b>110.9</b>	<b>225°</b>	<b>8400</b>
Chan <b>46</b>		TDZE <b>13</b>
		Apt Elev <b>13</b>

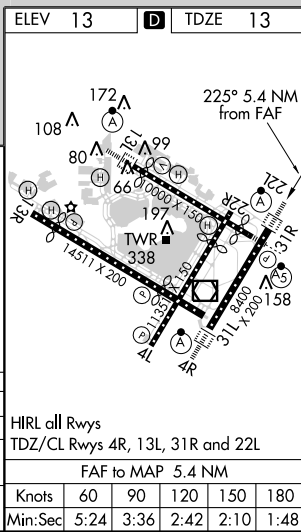
ILS or LOC RWY 22L  
NEW YORK / JOHN F. KENNEDY INTL (JFK)

<b>Simultaneous approach authorized with Rwy 22R.</b>	ALS-F-2	MISSED APPROACH: Climb to 500 then climbing left turn to 3000 via JFK R-190 to CHANT INT/19 DME and hold.
---	---------	---

ATIS (ARR-NE) (ARR-SW)	NEW YORK APP CON	KENNEDY TOWER	GND CON	CLNC DEL
<b>128.725 117.7 115.4</b>	<b>127.4 269.0</b>	Rwys 4R/22L and 13L/31R <b>119.1 281.55</b> Rwys 4L/22R and 13R/31L <b>123.9 281.55</b>	<b>121.9 348.6</b>	<b>121.9 348.6</b>



500	3000	CHANT INT	ZALPO INT I-HWY (6.8) RADAR	ROSLY INT I-HWY (12) RADAR	Procedure Turn NA
↑	JFK R-190		1800	3000	GS 3.00° TCH 53
0.2	5.2 NM	5.3 NM			
CATEGORY	A	B	C	D	
S-ILS 22L		213/18	200 (200-1/2)		
S-LOC 22L	460/24	447 (500-1/2)	460/40 447 (500-3/4)	460/50 447 (500-1)	
CIRCLING	640-1	627 (700-1)	640-1 3/4 627 (700-1 3/4)	640-2 627 (700-2)	



NE-2, 08 MAR 2012 to 05 APR 2012

NE-2, 08 MAR 2012 to 05 APR 2012