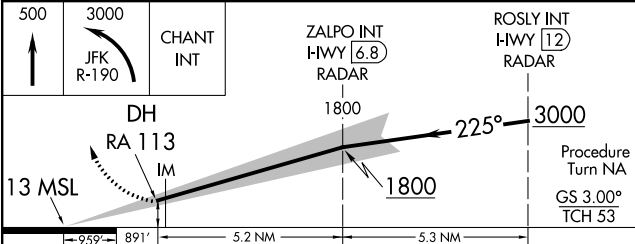
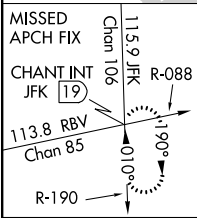
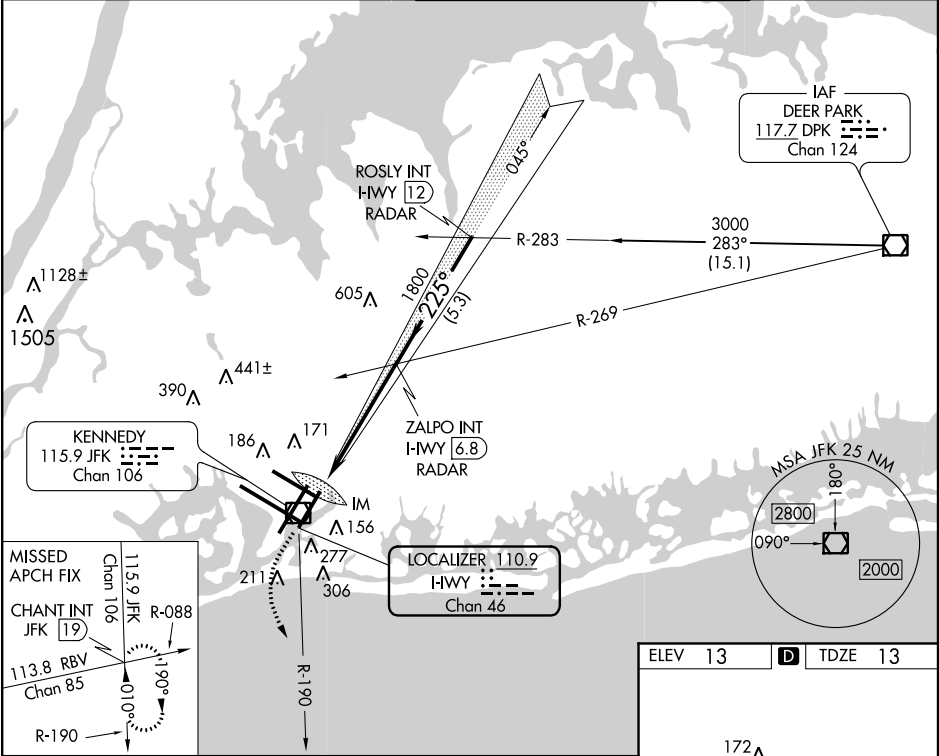


LOC/DME I-HWY	APP CRS	Rwy ldg	8400
<b>110.9</b>	<b>225°</b>	TDZE	<b>13</b>
Chan <b>46</b>		Apt Elev	<b>13</b>

**ILS RWY 22L (CAT II)**  
NEW YORK / JOHN F. KENNEDY INTL (JFK)

<b>Simultaneous approach authorized with Rwy 22R.</b>	ALSIF-2	MISSED APPROACH: Climb to 500 then climbing left turn to 3000 via JFK R-190 to CHANT INT/19 DME and hold.
---	---------	---

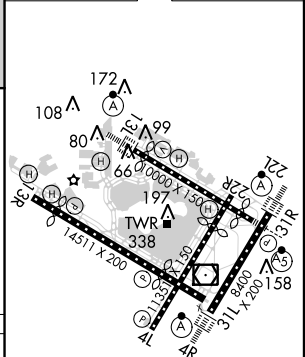
ATIS (ARR-NE)	(ARR-SW)	NEW YORK APP CON	KENNEDY TOWER	GND CON	CLNC DEL
<b>128.725</b>	<b>117.7</b>	<b>115.4</b>	Rwys 4R/22L and 13L/31R <b>119.1 281.55</b> Rwys 4L/22R and 13R/31L <b>123.9 281.55</b>	<b>121.9 348.6</b>	<b>135.05 348.6</b>



CATEGORY	A	B	C	D
S-ILS 22L	RA 113/12 100 DA 113			

**CATEGORY II ILS - SPECIAL AIRCREW & AIRCRAFT CERTIFICATION REQUIRED**

ELEV 13	TDZE 13
---------	---------



RLS Rwy 13R  
HIRL all Rwys  
TDZ/CL Rwys 4R, 13L, 31R and 22L

NE-2, 07 MAR 2013 to 04 APR 2013

NE-2, 07 MAR 2013 to 04 APR 2013