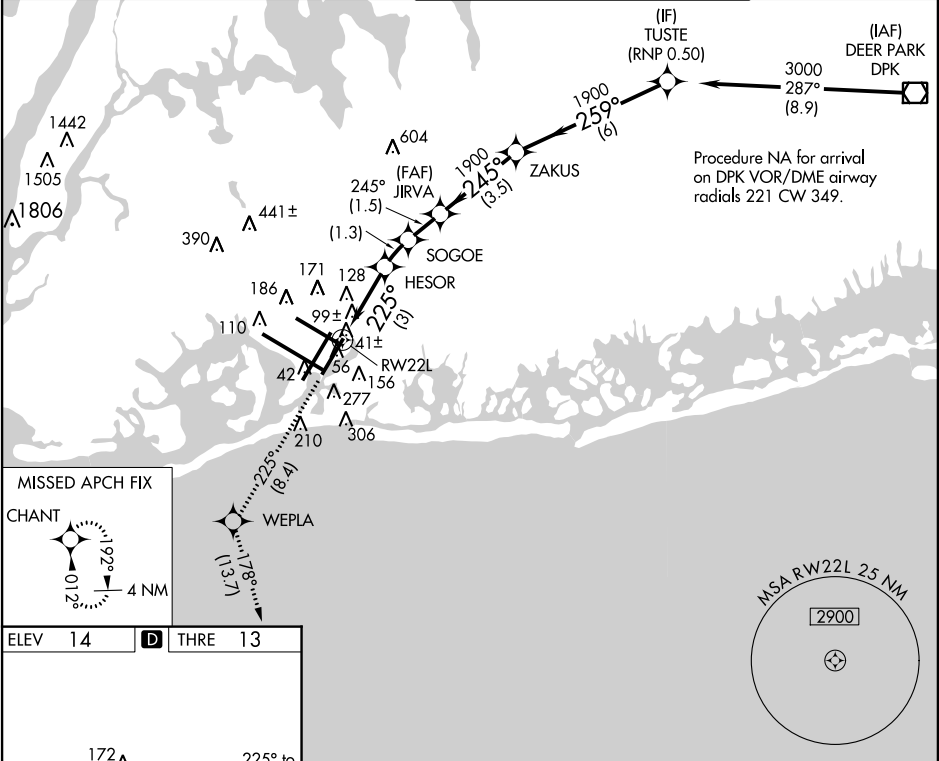


APP CRS	Rwy Idg	8400
225°	THRE	13
	Apt Elev	14

RNAV (RNP) Z RWY 22L  
JOHN F KENNEDY INTL (JFK)

▼ For uncompensated Baro-VNAV systems, procedure NA below -12°C (11°F) or above 54°C (130°F). RF required. GPS required. Simultaneous approach authorized with ILS Rwy 22R. Use of FD or AP providing RNAV track guidance required during simultaneous operations. For inop ALSF, increase RNP 0.20 and RNP 0.30 all Cnts visibility to RVR 6000.	ALSF-2	MISSED APPROACH: Climb to 3000 on track 225° to WEPLA and on track 178° to CHANT and hold.
---	--------	--

ATIS (ARR-NE) (ARR-SW)	NEW YORK APP CON	KENNEDY TOWER Rwy 4R/22L and 13L/31R Rwy 4L/22R and 13R/31L	GND CON	CLNC DEL
128.725 117.7 115.4	128.12 269.0	119.1 281.55 123.9 281.55	121.9 348.6	135.05 348.6



	VGSi and RNAV glidepath not coincident (VGSi Angle 3.00/TCH 66).				
		GP 3.00° TCH 50			
CATEGORY		A	B	C	D
RNP 0.20 DA		317/40 304 (400-¾)			
RNP 0.30 DA		406/40 393 (400-¾)			

RLS Rwy 13R

HIRL all Rwys

TDZ/CL Rwys 4R, 13L, 31R and 22L

**AUTHORIZATION REQUIRED**

NE-2, 05 MAR 2015 to 02 APR 2015

NE-2, 05 MAR 2015 to 02 APR 2015