

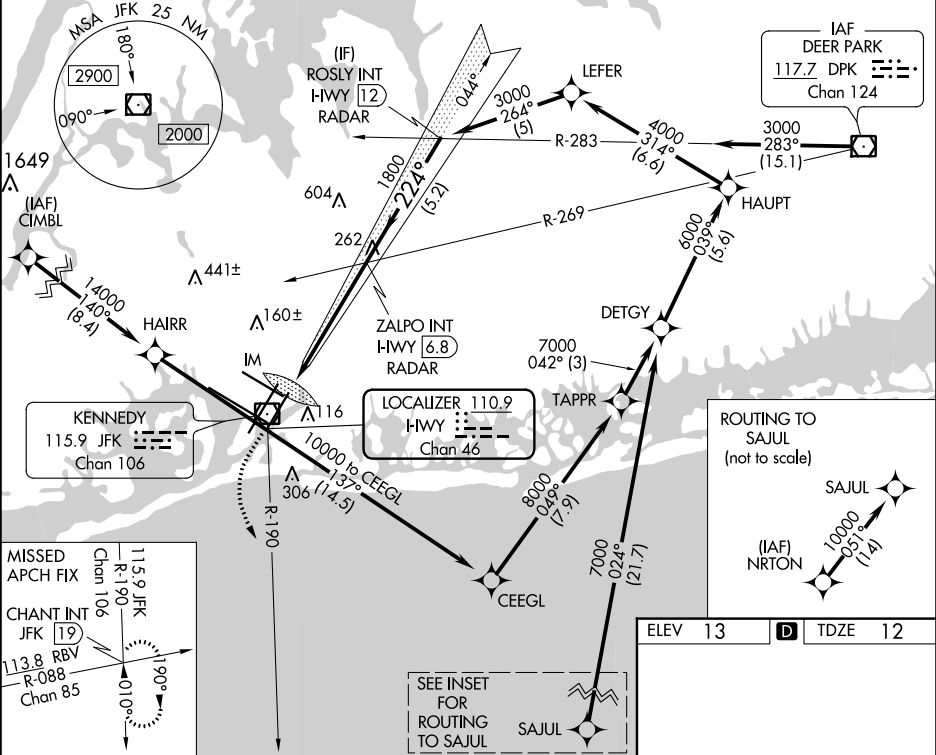
| | | | |
|----------------|-------------|----------|------|
| LOC/DME I-HWY | APP CRS | Rwy Idg | 8400 |
| 110.9 | 224° | TDZE | 12 |
| Chan 46 | | Apt Elev | 13 |

ILS RWY 22L (CAT II & III)

JOHN F KENNEDY INTL (JFK)

| | | |
|--|-------------|--|
| RNAV 1-GPS or RADAR required for procedure entry. From CIMBL, NRTON: RNAV 1-GPS required. | ALSIF-2 | MISSED APPROACH: Climb to 500 then climbing left turn to 3000 on JFK VOR/DME R-190 to CHANT INT/19 DME and hold. |
| <div>Simultaneous approach authorized.</div> | <div></div> | |

| | | | | | |
|---------------------------------------|------------------|--|------------------------------|-------------------------------|-------|
| D-ATIS (ARR/DEP) (ARR-NE) (ARR-SW) | NEW YORK APP CON | KENNEDY TOWER | GND CON | CLNC DEL | CPDLC |
| 128.725 117.7 115.4 | 128.125 269.0 | Rwys 4R/22L and 13L/31R 119.1 281.55 Rwys 4L/22R and 13R/31L 123.9 281.55 | 121.9 348.6 | 135.05 348.6 | |



| | | | | |
|---|-----------------------------|-----------|--|----------------------------|
| 500 | 3000 | CHANT INT | VGSI and ILS glidepath not coincident (VGSI Angle 3.00/TCH 66). | ROSLY INT I-HWY [12] RADAR |
| JFK R-190 | | | | |
| IM | 113 | | | |
| 958' | 5.5 NM | | | |
| CATEGORY | A | B | C | D |
| S-ILS 22L | CAT II RA 113/12 100 DA 112 | | | |
| S-ILS 22L | CAT III RVR 06 | | | |
| CATEGORY II & III ILS - SPECIAL AIRCREW & AIRCRAFT CERTIFICATION REQUIRED | | | | |

