

NEW YORK, NEW YORK

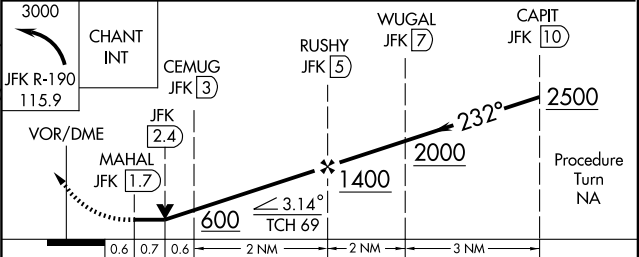
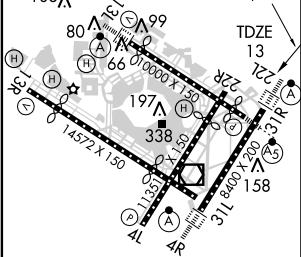
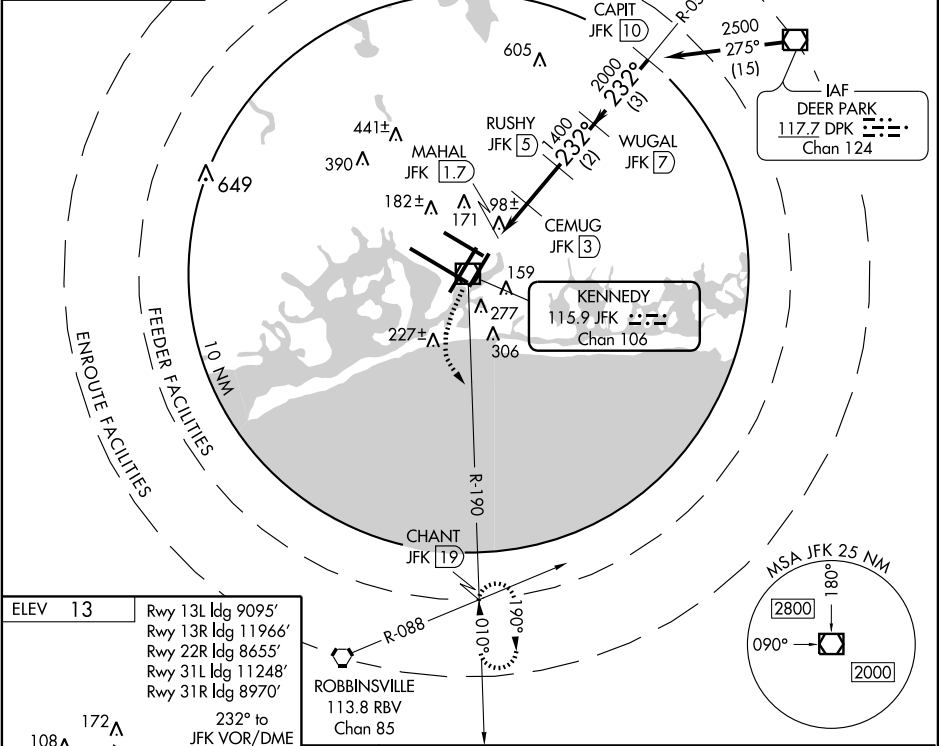
AL-610 (FAA)

VOR/DME JFK	APP CRS	Rwy Idg	8400
115.9	232°	TDZE	13
Chan 106		Apt Elev	13

VOR/DME RWY 22L
NEW YORK / JOHN F. KENNEDY INTL (JFK)

	ALSF-2 	MISSED APPROACH: Climbing left turn to 3000 via JFK R-190 to CHANT Int/19 DME and hold.
---	---	--

ARR	ATIS (NE) (SW)	NEW YORK APP CON	KENNEDY TOWER	GND CON	CLNC DEL
128.725	117.7 115.4	127.4 269.0	Rwys 4R/22L and 13L/31R 119.1 281.55 Rwys 4L/22R and 13R/31L 123.9 281.55	121.9 348.6	135.05
DEP					
115.1					



CATEGORY	A	B	C	D
S-22L	440/24 427 (500-½)		440/40 427 (500-¾)	440/50 427 (500-1)
CIRCLING	640-1 627 (700-1)		640-1¾ 627 (700-1¾)	640-2 627 (700-2)

NEW YORK, NEW YORK
Amdt 4D 08045

40°38'N - 73°47'W

NEW YORK / JOHN F. KENNEDY INTL (JFK)
VOR/DME RWY 22L

NE-2, 14 FEB 2008 to 13 MAR 2008

NE-2, 14 FEB 2008 to 13 MAR 2008