


NEW YORK, NEW YORK

AL-610 (FAA)

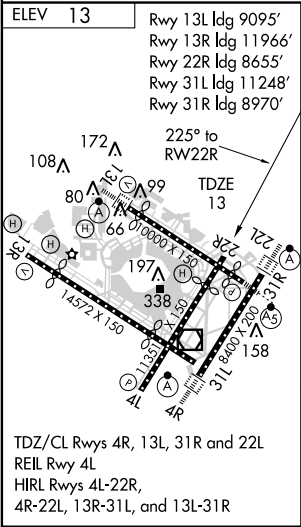
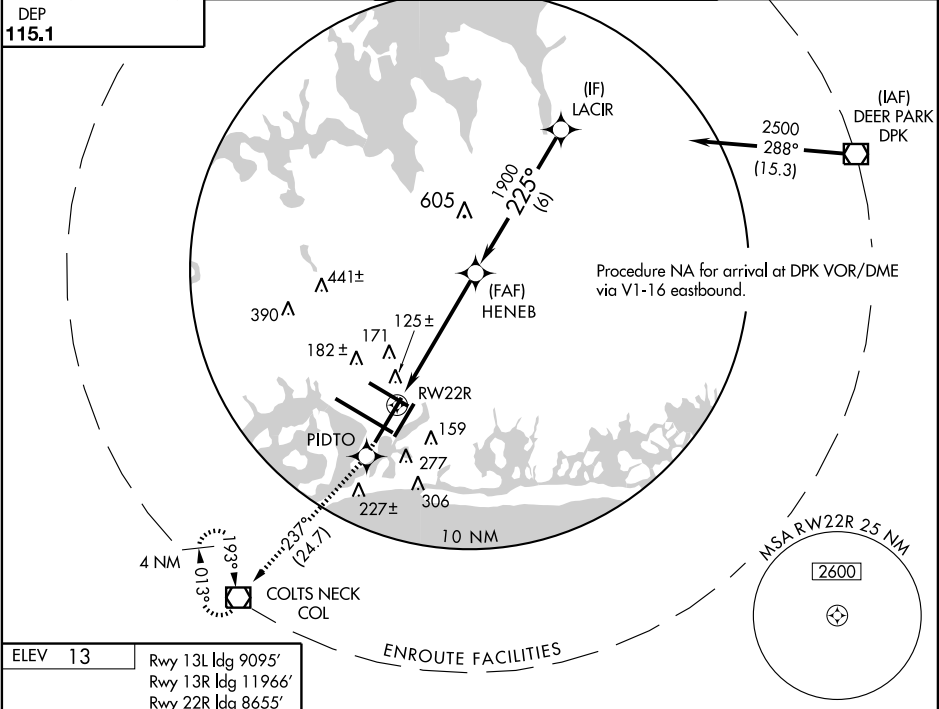
WAAS CH <b>40019</b> <b>W22B</b>	APP CRS <b>225°</b>	Rwy ldg TDZE Apt Elev	<b>8655</b> <b>13</b> <b>13</b>
--	------------------------	-----------------------------	---------------------------------------

# RNAV (GPS) RWY 22R

NEW YORK / JOHN F. KENNEDY INTL (JFK)

 DME/DME RNP -0.3 NA. Baro-VNAV NA below -15°C (5°F).	MISSED APPROACH: Climb to 4000 direct PIDTO and right turn via 237° track to COL VOR/DME and hold.
--	---

ARR <b>128.725</b> DEP <b>115.1</b>	ATIS (NE) <b>117.7</b> (SW) <b>115.4</b>	NEW YORK APP CON <b>127.4 269.0</b>	KENNEDY TOWER Rwys 4R/22L and 13L/31R <b>119.1 281.55</b> Rwys 4L/22R and 13R/31L <b>123.9 281.55</b>	GND CON <b>121.9 348.6</b>	CLNC DEL <b>135.05</b>
--	--	--	---	-------------------------------	---------------------------



ELEV 13	Rwy 13L ldg 9095' Rwy 13R ldg 11966' Rwy 22R ldg 8655' Rwy 31L ldg 11248' Rwy 31R ldg 8970'	4000 ↑ PIDTO *1.7 NM to RW22R *LNAV only 1.7 4 NM 6 NM	COL TRK 237°	LACIR HENEB 2500 Procedure Turn NA GS 3.00° TCH 59
CATEGORY	A	B	C	D
LPV DA	270/40	257 (300-¾)		
LNAV/VNAV DA	480-1½	467 (500-1½)		
LNAV MDA	600/50 587 (600-1)	600-1½ 587 (600-1½)	600-1¾ 587 (600-1¾)	
CIRCLING	640-1½ 627 (700-1½)	640-1¾ 627 (700-1¾)	640-2 627 (700-2)	

NEW YORK, NEW YORK  
Amdt 1 08045

NEW YORK / JOHN F. KENNEDY INTL (JFK)  
40°38'N - 73°47'W  
**RNAV (GPS) RWY 22R**

NE-2, 14 FEB 2008 to 13 MAR 2008

NE-2, 14 FEB 2008 to 13 MAR 2008