

AL-610 (FAA)

| | | |
|--|------------------------|---|
| WAAS CH 97318 W22A | APP CRS 225° | Rwy Idg 8400 TDZE 13 Apt Elev 13 |
|--|------------------------|---|

RNAV (GPS) RWY 22L

NEW YORK / JOHN F. KENNEDY INTL (JFK)

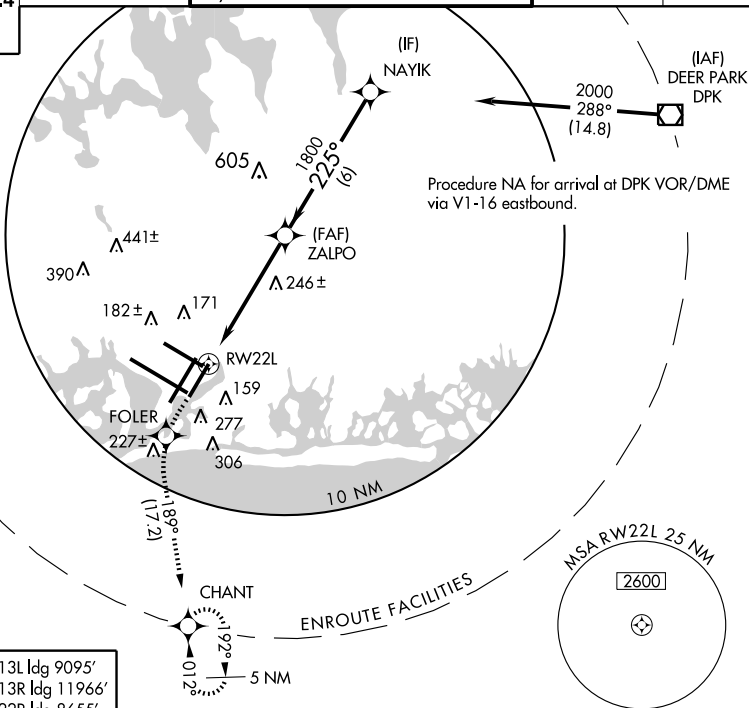


DME/DME RNP -0.3 NA. Baro-VNAV NA
below -15°C (5°F). For inoperative ALSF-2,
increase LPV all CAT's visibility to RVR 4000.

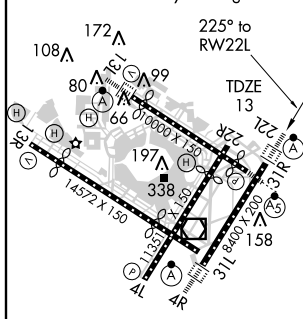


MISSED APPROACH: Climb to 3000 direct FOLER and via 189° track to CHANT and hold.

| | | | | | | | | |
|---------|--------------|-------|------------------|-------|-------------------------|--------------|-------------|----------|
| ARR | ATIS (NE) | (SW) | NEW YORK APP CON | | KENNEDY TOWER | | GND CON | CINC DEL |
| 128.725 | 117.7 | 115.4 | 127.4 | 269.0 | Rwys 4R/22L and 13L/31R | 119.1 281.55 | 121.9 348.6 | 135.05 |
| DEP | | | | | Rwys 4L/22R and 13R/31L | 123.9 281.55 | | |
| 115.1 | | | | | | | | |



| | |
|---------|--------------------|
| ELEV 13 | Rwy 13L Idg 9095' |
| | Rwy 13R Idg 11966' |
| | Rwy 22R Idg 8655' |
| | Rwy 31L Idg 11248' |
| | Rwy 31R Idg 8970' |



TDZ/CL Rwy 4R, 13L, 31R and 22L
REIL Rwy 4L
HIRL Rwy 4L-22R,
4R-22L, 13R-31L and 13L-31R

NEW YORK, NEW YORK

Amdt 1 08045

NEW YORK / JOHN F. KENNEDY INTL (JFK)

40°38'N - 73°47'W

RNAV (GPS) RWY 22L

NE-2, 14 FEB 2008 to 13 MAR 2008

NE-2. 14 FEB 2008 to 13 MAR 2008