

NEW YORK, NEW YORK

AL-610 (FAA)

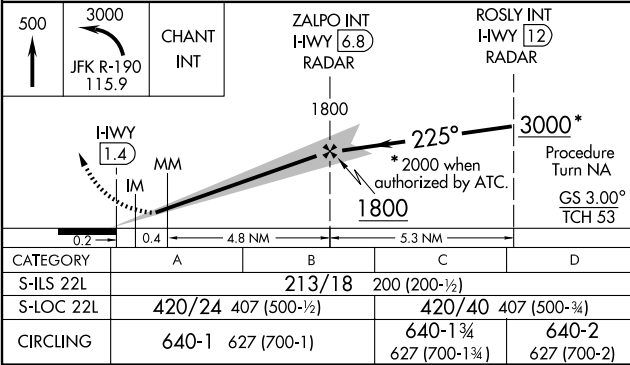
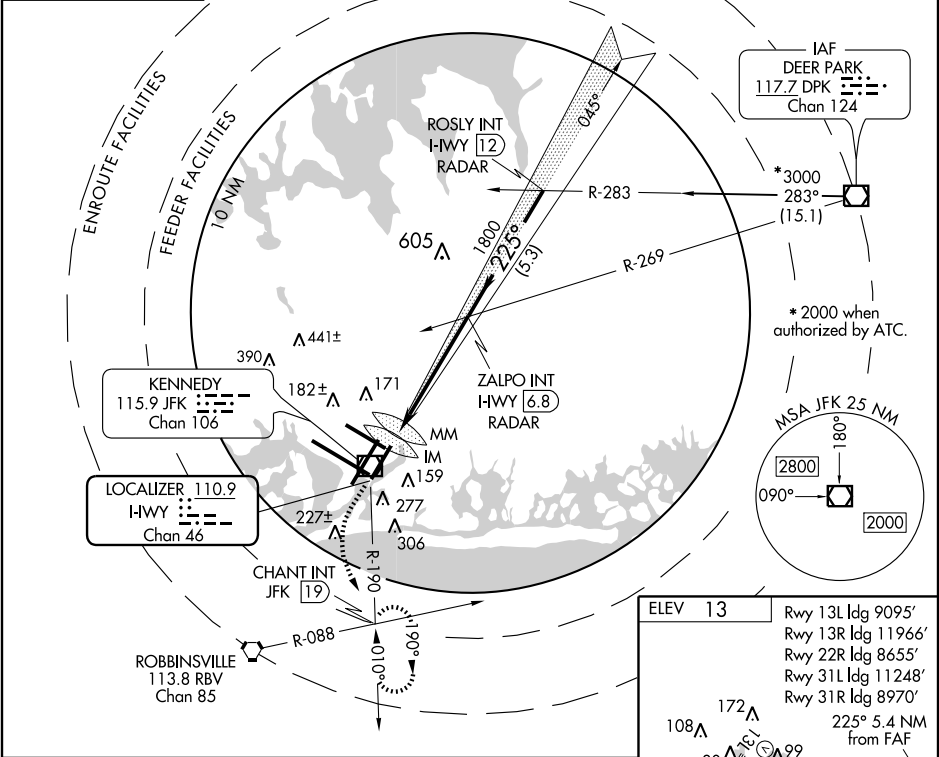
LOC/DME I-HWY	APP CRS	Rwy ldg	8400
110.9	225°	TDZE	13
Chan 46		Apt Elev	13

ILS RWY 22L

NEW YORK / JOHN F. KENNEDY INTL (JFK)

	ALS-F-2 	MISSED APPROACH: Climb to 500 then climbing left turn to 3000 via JFK R-190 to CHANT Int/19 DME and hold.
--	-------------	---

ARR	ATIS (NE) (SW)	NEW YORK APP CON	KENNEDY TOWER	GND CON	CLNC DEL
128.725	117.7 115.4	127.4 269.0	Rwys 4R/22L and 13L/31R 119.1 281.55 Rwys 4L/22R and 13R/31L 123.9 281.55	121.9 348.6	135.05
DEP					
115.1					



ELEV 13	Rwy 13L ldg 9095'
	Rwy 13R ldg 11966'
	Rwy 22R ldg 8655'
	Rwy 31L ldg 11248'
	Rwy 31R ldg 8970'
	225° 5.4 NM from FAF
	TDZE 13
	REIL Rwy 4L
	HIRL Rwys 4L-22R, 4R-22L, 13R-31L, and 13L-31R
	TDZ/CL Rwys 4R, 13L, 31R and 22L
	FAF to MAP 5.4 NM
Knots	60 90 120 150 180
Min:Sec	5:24 3:36 2:42 2:10 1:48

NEW YORK, NEW YORK
Amdt 24 07354

NEW YORK / JOHN F. KENNEDY INTL (JFK)
ILS RWY 22L

40°38'N - 73°47'W

NE-2, 14 FEB 2008 to 13 MAR 2008

NE-2, 14 FEB 2008 to 13 MAR 2008