

APP CRS	Rwy Idg	8400
225°	TDZE	13
	Apt Elev	13

RNAV (RNP) Z RWY 22L

NEW YORK / JOHN F. KENNEDY INTL (JFK)

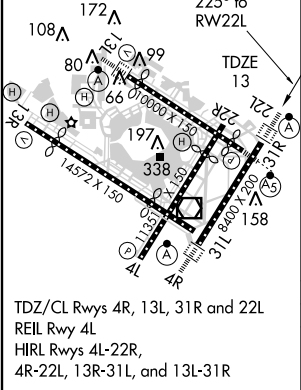
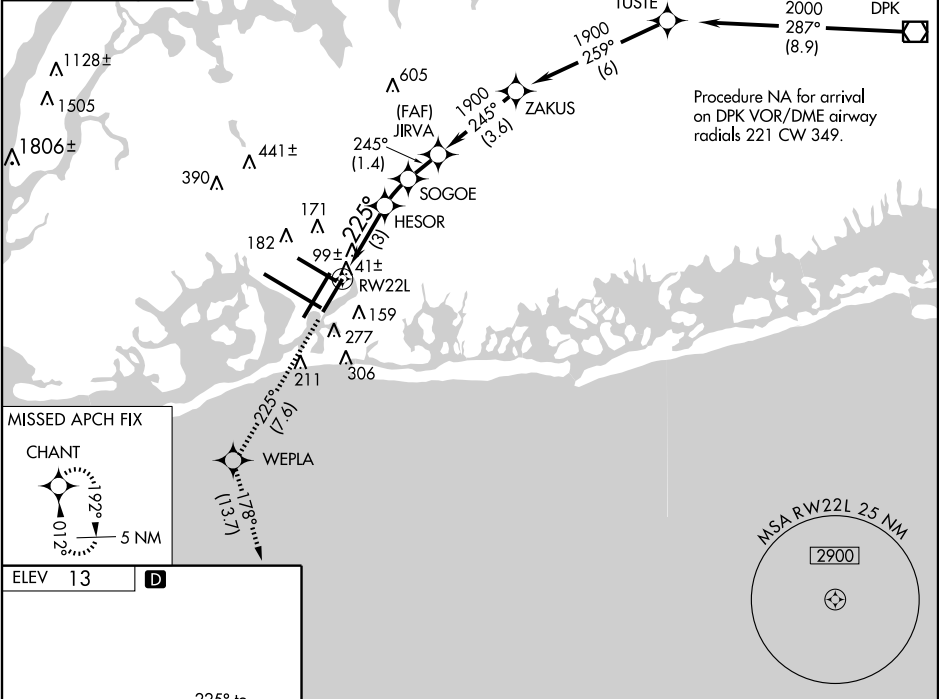
NA For uncompensated Baro-VNAV systems, procedure NA below -13°C (8°F) or above 49°C (120°F). RF and GPS Required. For inoperative ALSF, increase RNP 0.20 DA visibility to RVR 5000 all Cats, RNP 0.30 DA visibility to RVR 6000 all Cats. Visibility reduction by helicopters NA.

ALSF-2



MISSED APPROACH: Climb to 3000 via 225° track to WEPLA and via 178° track to CHANT and hold.

ARR	ATIS	NEW YORK APP CON	KENNEDY TOWER	GND CON	CLNC DEL
(NE) (SW)					
128.725	117.7	127.4	269.0	119.1 281.55	121.9 348.6
DEP				123.9 281.55	135.05 348.6
115.1					



CATEGORY	A	B	C	D
RNP 0.20 DA	339/40	326 (400-¾)		
RNP 0.30 DA	408/50	395 (400-1)		

SPECIAL AIRCRAFT AND AIRCREW AUTHORIZATION REQUIRED