

PARCH ONE ARRIVAL (RNAV)

ST-610 (FAA)

NEW YORK, NEW YORK

NE-2, 11 FEB 2010 to 11 MAR 2010

NEW YORK APP CON
125.7 269.0
KENNEDY INTL ATIS ARR 128.725
(NE) 117.7
(SW) 115.4

ARRIVAL ROUTE DESCRIPTION

KENNEBUNK TRANSITION (ENE.PARCH1)
PLYMM TRANSITION (PLYMM.PARCH1)
SANDY POINT TRANSITION (SEY.PARCH1)

From PARCH via 266° track to CCC VOR/DME. Then via 230° track to ROBER. Thence . . .

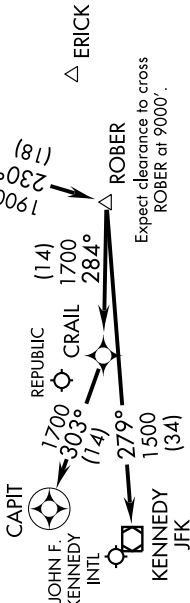
. . . . LDG Rwy 4R/L, Rwy 13R/L, Rwy 31R/L: From ROBER via 279° track to JFK VOR/DME, expect radar vectors to final approach course.

. . . . LDG Rwy 22R/L: From ROBER via 284° track to CRAIL. Then via 303° track to CAPIT, expect radar vectors to final approach course.

. . . . LDG Republic (KFRG) Airport: Approaching ROBER expect radar vectors to final approach course.

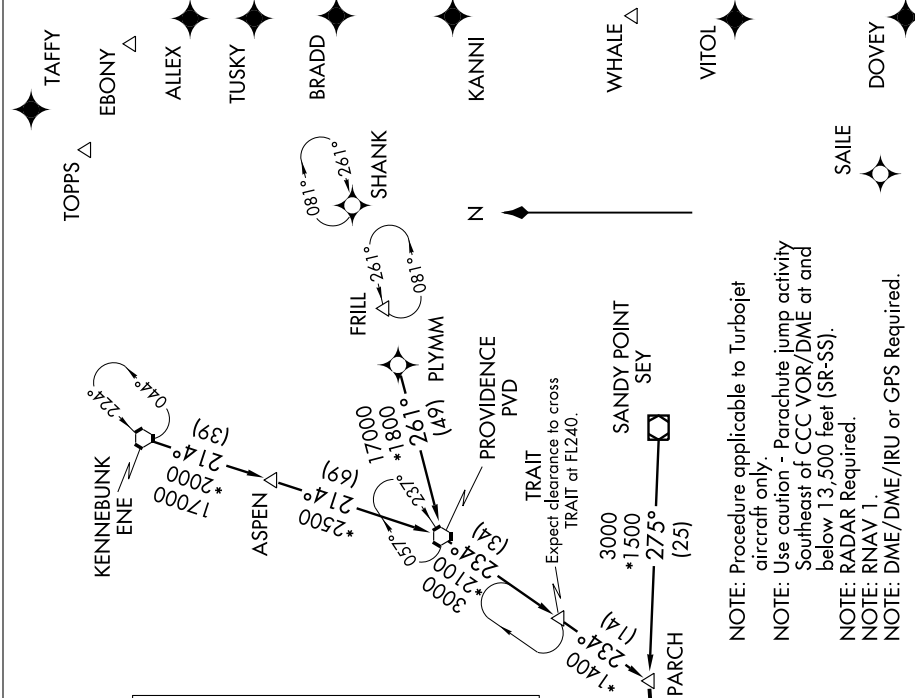
CALVERTON

CCC
Expect clearance to cross
CCC VOR/DME at 12000'
and 250 KIAS.



NOTE: Chart not to scale.

NOTE: Procedure applicable to Turbojet aircraft only.
NOTE: Use caution - Parachute jump activity Southeast of CCC VOR/DME at and below 13,500 feet (SR-SS).
NOTE: RADAR Required.
NOTE: RNAV 1.
NOTE: DME/DME/IRU or GPS Required.



PARCH ONE ARRIVAL (RNAV)

NEW YORK, NEW YORK

NE-2, 11 FEB 2010 to 11 MAR 2010