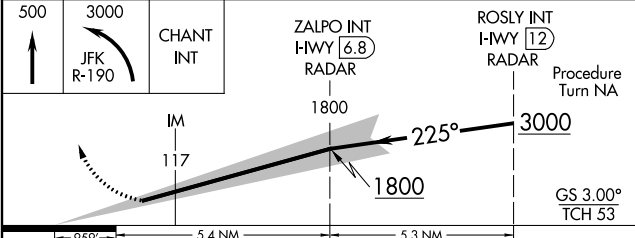
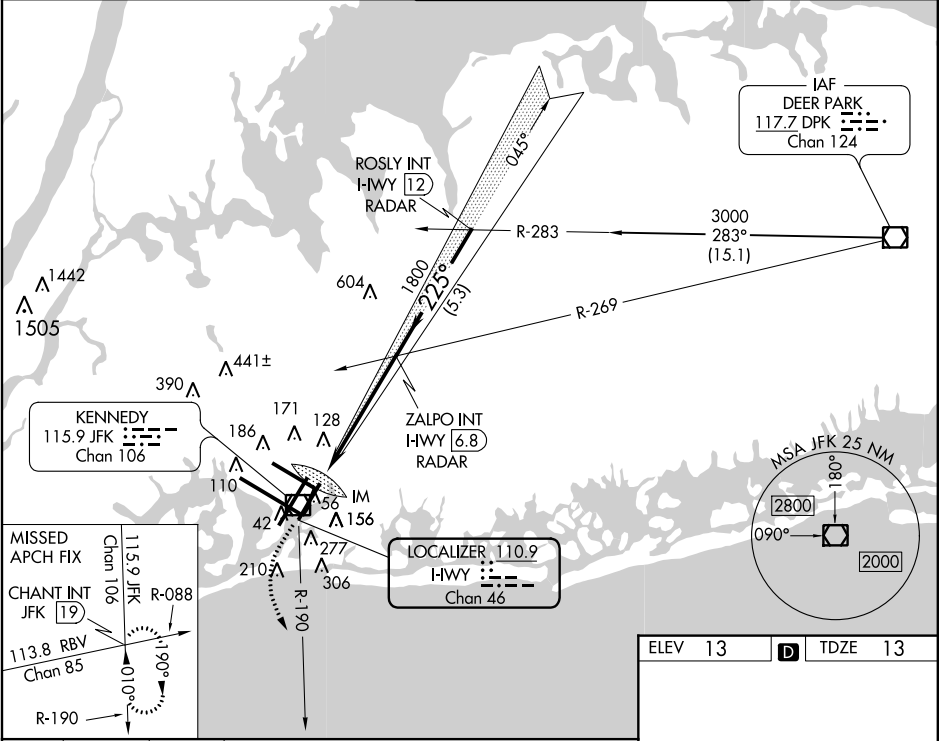


LOC/DME I-HWY	APP CRS	Rwy Idg	8400
<b>110.9</b>	<b>225°</b>	TDZE	13
Chan <b>46</b>		Apt Elev	13

ILS RWY 22L (CAT II & III)  
JOHN F KENNEDY INTL (JFK)

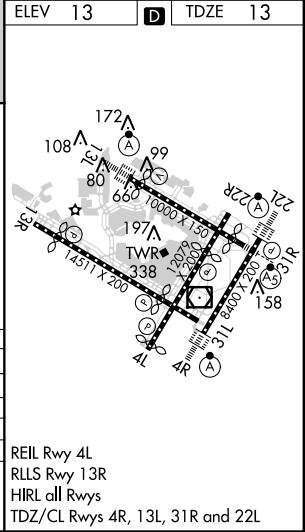
<b>V</b> <b>A</b> Simultaneous approach authorized with Rwy 22R.	ALSF-2 	MISSED APPROACH: Climb to 500 then climbing left turn to 3000 via JFK R-190 to CHANT INT/19 DME and hold.
---	------------	---

ATIS (ARR-NE) (ARR-SW)	NEW YORK APP CON	KENNEDY TOWER Rwys 4R/22L and 13L/31R Rwys 4L/22R and 13R/31L	GND CON	CLNC DEL
<b>128.725 117.7 115.4</b>	<b>128.12 269.0</b>	<b>119.1 281.55</b> <b>123.9 281.55</b>	<b>121.9 348.6</b>	<b>135.05 348.6</b>



CATEGORY	A	B	C	D
S-ILS 22L	CAT II RA 113/12	100 DA 113		
S-ILS 22L	CAT IIIa	RVR 07		
S-ILS 22L	CAT IIIb	RVR 06		
S-ILS 22L	CAT IIIc	NA		

CATEGORY II & III ILS - SPECIAL AIRCREW  
& AIRCRAFT CERTIFICATION REQUIRED



NE-2, 04 FEB 2016 to 03 MAR 2016

NE-2, 04 FEB 2016 to 03 MAR 2016