

APP CRS	Rwy Idg	8400
225°	TDZE	12
	Apt Elev	14

RNAV (RNP) Z RWY 22L

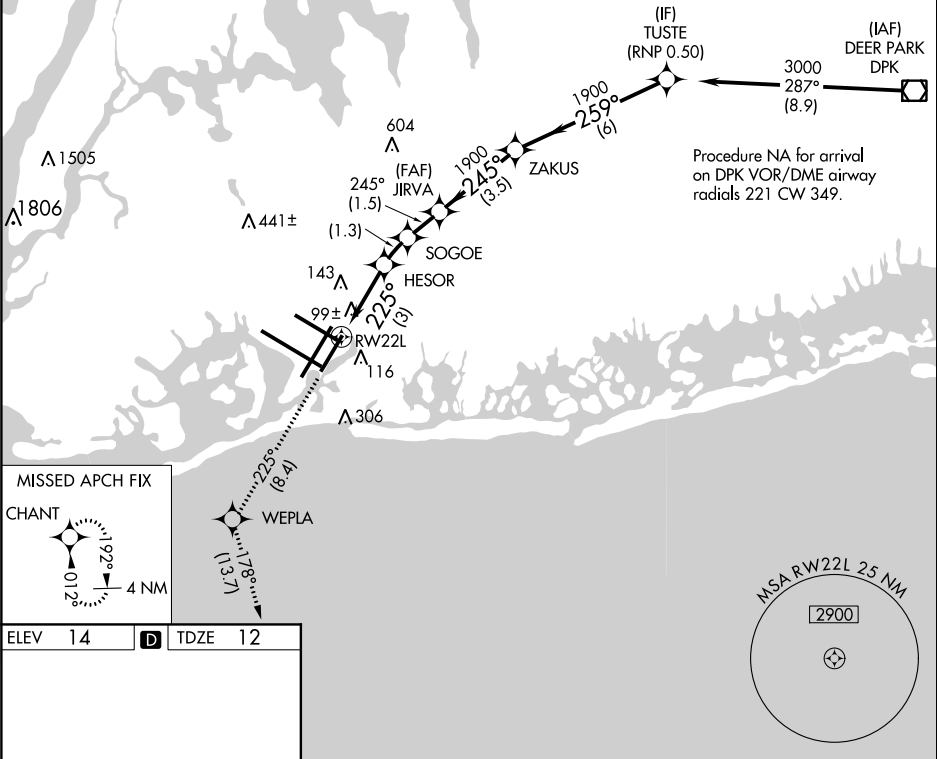
JOHN F KENNEDY INTL (JFK)

▼ For uncompensated Baro-VNAV systems, procedure NA below -12°C (11°F) or above 54°C (130°F). RF required. Simultaneous operations authorized. Use of FD or AP providing RNAV track guidance required during simultaneous operations. For inop ALSF, increase RNP 0.20 and RNP 0.30 all Cats visibility to RVR 6000.

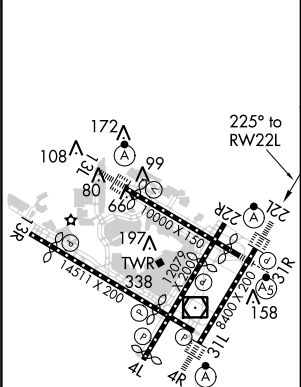
ALSF-2

MISSED APPROACH: Climb to 3000 on track 225° to WEPLA and on track 178° to CHANT and hold.

D-ATIS (ARR/DEP) (ARR-NE) (ARR-SW)	NEW YORK APP CON	KENNEDY TOWER	GND CON	CLNC DEL	CPDLC
128.725 117.7 115.4	128.125 269.0	Rwys 4R/22L and 13L/31R 119.1 281.55 Rwys 4L/22R and 13R/31L 123.9 281.55	121.9 348.6	135.05 348.6	



ELEV 14	D	TDZE 12
---------	----------	---------



REIL Rwy 4L
RLLS Rwy 13R
HIRL all Rwys
TDZ/CL Rwys 4R, 13L, 31R and 22L

3000	tr 225°	WEPLA	tr 178°	CHANT	VGSI and RNAV glidepath not coincident (VGSI Angle 3.00/TCH 66).
					JIRVA ZAKUS TUSTE
					1900 1900 3000
					GP 3.00° TCH 50
					3 NM 1.3 NM 1.5 NM 3.5 NM 6 NM
CATEGORY	A	B	C	D	
RNP 0.20 DA		316/40 304 (400-¾)			
RNP 0.30 DA		405/40 393 (400-¾)			

AUTHORIZATION REQUIRED